



Ortronics is a member  
of the Cisco Technology  
Developer Programme



Expertise • Technology • Solutions

# OptiMo<sup>®</sup>

High performance  
fibre optic solutions  
LANs, SANs, Data Centres

## Fibre Structured Right ! Put fibre to work in your network with the one management system that does it all.

If you're ready for a fibre optic structured cabling system for your LAN, SAN, or data centre, Ortronics is ready with innovative solutions for faster installation, higher performance, and easier administration. Our products are engineered with attention to detail for:

- › Neater and more flexible cable routing.
- › Simpler moves, adds, and changes.
- › Space-saving, high-density installations.
- › Flexibility to grow.
- › Long-term reliability.

### › 10G Ready to Go the Distance

**OptiMo fibre optic systems give you the full benefits of fibre's higher bandwidth and longer transmission distances.**

- › Laser-optimised 50/125-µm multimode fibre (LOMF) to achieve the full data rates specified for high speed Fibre Channel and 10G Ethernet.
- › Single mode solutions with the bandwidth and distances for interfloor and interbuilding campus applications.
- › Standard 62.5/125-µm and 50/125-µm multimode fibre for legacy applications.

### › Finally, Copper and Fibre Gracefully in One Rack

Forget about needing separate racks for fibre and for copper - or messy installations to force - fit the two media into one rack. Our new line of fibre cabinets and related hardware works perfectly with Mighty Mo 6 racks. So you need only one rack system for all your cabling installations.

### › Solutions to Fit Your Style

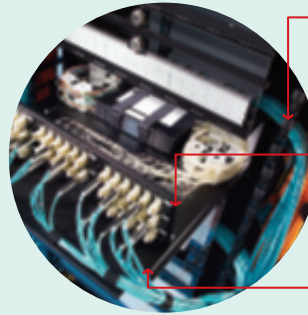
Whether you are planning a data centre/SAN or an Ethernet LAN, we can show you more ways to achieve your goal. This brochure covers two common, convenient options:

- › **Momentum:** Snap-in Momentum pre-terminated cassettes and cable assemblies are the easy "plug-in and go" approach to structured cabling.
- › **Field-installable systems:** Choose the system option best for your installation. Ortronics offers two styles of field installable connectors. Our pre-polished no-epoxy/no-polish style connectors install fast with consistent results. Our Anaerobic field polished or pre-polished connectors deliver the cost savings and reliability you demand for a high performance system.
- › **Supporting Components:** Ortronics has the connecting hardware to make any installation clean and easy from the rack to the workstation outlet.

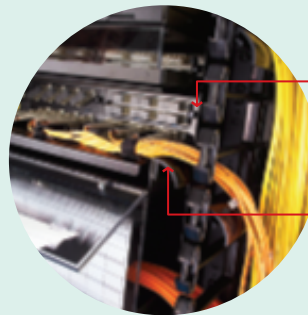
### › Peace of Mind

With one of the best warranties in the industry, we guarantee your OptiMo system will meet or exceed all industry-standard application requirements, including TIA/EIA-568-B cabling systems, IEEE 802.3 Ethernet, and Fibre Channel.

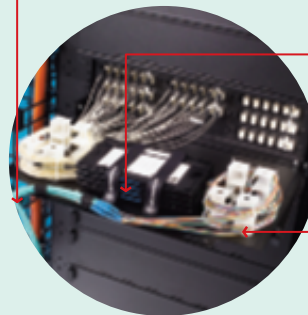
# Engineered better to perform better



- Large patch cord exit ports at the front of a cabinet provide maximum clearance for management of fibre patch cords in high-density installations
- Easy front access: fibre tray slides forward and backward for termination of optical fibres, internal fibre routing, and patch cord management
- Front cable management for organizing patch cords and to prevent cable pinching

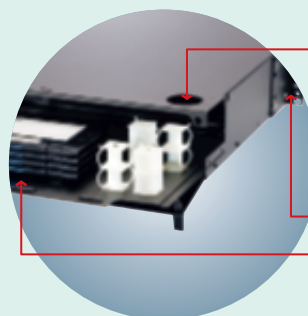


- Adapter panel face aligns with vertical cable management to optimize patch cord management for best possible patch cord exit
- Bend radius clips help maintain minimum bend radius



- Hook/loop lances built-in to the fibre tray are positioned for optimal internal fibre management
- Specially positioned hook/loop lances secure splice tray firmly to the rear sliding tray
- Cable brackets include lances for hook/loop fasteners
- Patented\* snap-in fibre management clips ensure fibre bend radius compliance and snap into receptacles for a secure installation and optimum fibre protection

\*Patent No. 6,278,830



- Easy rear access: fibre tray slides rearward for additional access, improved backbone cable management, internal fibre routing and rear cabinet internal routing holes added
- Adjustable mounting brackets
- Optional tray locking accessory kit to prevent movement (FCTL-001)

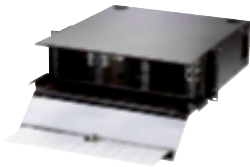
# OptiMo®

## LANs, SANs, Data Centres

### FC Series

Get the fibre-management products to round out any installation with cabinets, patch panels, splice trays, and workstation outlets.

#### Rack Mount Fibre Cabinets



OR-FC03U-P

Ortronics New FC Series, Rack-Mount Fibre Cabinets for Patch and Splicing Applications 482.6 mm-deep cabinet chassis provides more room for internal fibre management and is optimised for use with Mighty Mo 6 266.7 mm deep rack system. Available in 1, 2, 3, 4 rack, unit heights.

Part No.	Application	Height	Adapter Panels Capacity	Splice Tray Capacity
OR-FC01U-P	Patching	1U	3	-
OR-FC02U-P		2U	6	-
OR-FC03U-P		3U	9	-
OR-FC04U-P		4U	12	-
OR-FC01U-C	Splicing/Patching	1U	3	2
OR-FC02U-C		2U	6	6
OR-FC03U-C		3U	9	11
OR-FC04U-C		4U	12	16
OR-FC01U-S	Splicing	1U	-	4
OR-FC02U-S		2U	-	12
OR-FC03U-S		3U	-	22
OR-FC04U-S		4U	-	32

#### Cable Fastening Brackets



OR-FCBR-001

OR-FCBR-002

Provide robust backbone cable retention when installing from above or below cabinet. Accommodates cable of all diameters to be fastened using flexible and strong hook/loop straps.

Part No.	Cabinet	Position
OR-FCBR-001	1U	Top
OR-FCBR-002	2, 3, 4U	Top
OR-FCBR-003	2, 3, 4U	Bottom

#### Accessories



OR-FCTL-001

Part No.	Description
OR-70800158	Bend limiting clips. For internal fibre management, package of 8 clips
OR-70700107-00	D-Ring cable management straps. Hook/loop style, package of 12
OR-FCTL-001	Tray lock kit. For FC Series cabinets, package of one

#### Splice Tray for Fusion Splices



OR-FST2-F012

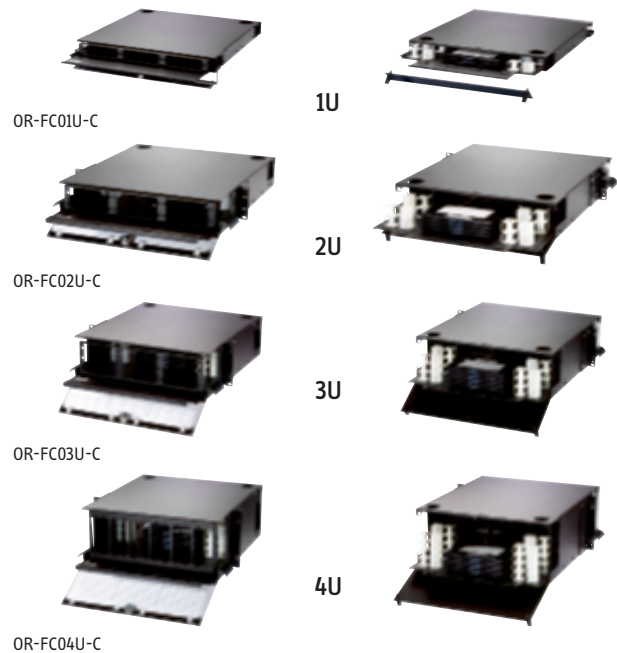
Slimline, stackable design to allow higher splice density.

Part No.	Description
OR-FST2-F012	Fusion splicetray for 12 splices

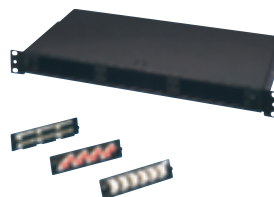
#### Front and Rear View

##### Front View

##### Rear View



#### Standard low Profile Rack Mount Patch Fibre Cabinet



OR-61500569-00

Part No.	Description	Depth (mm)
OR-61500569-00	Holds three adapter panels Slide-design drawer High density ST, SC: 36 fibres 1 rack unit 4.5 kg	220

# Adapter Panels

## Fibre Optic Adapter Panels



OR-OFP-LCD12LC

Part No.	Description
OR-OFP-LCD12MB	6-LC duplex (12 fibres) multimode, beige adapters, phosphor-bronze alignment sleeves
OR-OFP-LCD12AC	6-LC duplex (12 fibres) single-mode, blue adapters, ceramic alignment sleeves
OR-OFP-LCD12LC	6-LC duplex (12 fibres) multimode, aqua adapters, ceramic alignment sleeves

## Fibre Optic Adapter Panels



OR-OFP-LCQ24LC

Part No.	Description
OR-OFP-LCQ24MB	6-LC quad (24 fibres) multimode, beige adapters, phosphor-bronze alignment sleeves
OR-OFP-LCQ24AC	6-LC quad (24 fibres) single-mode, blue adapters, ceramic alignment sleeves
OR-OFP-LCQ24LC	6-LC quad (24 fibres) multimode, aqua adapters, ceramic alignment sleeves

## Fibre Optic Adapter Panels



OR-OFP-SCD06LC

Part No.	Description
OR-OFP-SCD06MB	3-SC duplex (6 fibres) multimode, beige adapters, phosphor-bronze alignment sleeves
OR-OFP-SCD06AC	3-SC duplex (6 fibres) single-mode, blue adapters, ceramic alignment sleeves
OR-OFP-SCD06LC	3-SC duplex (6 fibres) multimode, aqua adapters, ceramic alignment sleeves

Note: Designation strip kit provided for accurate port identification.

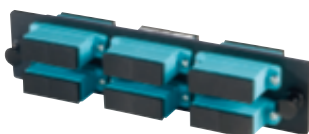
## Fibre Optic Adapter Panels



OR-OFP-SCD08LC

Part No.	Description
OR-OFP-SCD08MB	4-SC duplex (8 fibres) multimode, beige adapters, phosphor-bronze alignment sleeves
OR-OFP-SCD08AC	4-SC duplex (8 fibres) single-mode, blue adapters, ceramic alignment sleeves
OR-OFP-SCD08LC	4-SC duplex (8 fibres) multimode, aqua adapters, ceramic alignment sleeves

## Fibre Optic Adapter Panels



OR-OFP-SCD12LC

Part No.	Description
OR-OFP-SCD12MB	6-SC duplex (12 fibres) multimode, beige adapters, phosphor-bronze alignment sleeves
OR-OFP-SCD12AC	6-SC duplex (12 fibres) single-mode, blue adapters, ceramic alignment sleeves
OR-OFP-SCD12LC	6-SC duplex (12 fibres) multimode, aqua adapters, ceramic alignment sleeves

## Fibre Optic Adapter Panels



OR-OFP-MPA72LA

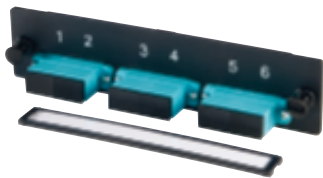
Part No.	Description
OR-OFP-MPA72MA	6-MPO (72 fibres) multimode, beige, feed-through adapters, Type A
OR-OFP-MPA72CA	6-MPO (72 fibres) single-mode, green, feed-through adapters, Type A
OR-OFP-MPA72LA	6-MPO (72 fibres) multimode, aqua, feed-through adapters, Type A

Note: Type A adapters are KeyUp/KeyDown



### Adapter Panels

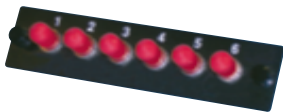
#### Fibre Optic Adapter Panels



OR-OFP-SCS06LC

Part No.	Description
OR-OFP-SCS06MB	6-SC simplex (6 fibres) multimode, beige adapters, phosphor-bronze alignment sleeves
OR-OFP-SCS06AC	6-SC simplex (6 fibres) single-mode, blue adapters, ceramic alignment sleeves
OR-OFP-SCS06LC	6-SC simplex (6 fibres) multimode, aqua adapters, ceramic alignment sleeves

#### Fibre Optic Adapter Panels



OR-OFP-STSO6NB

Part No.	Description
OR-OFP-STSO6NB	6-ST simplex (6 fibres) multimode adapters, phosphor-bronze alignment sleeves
OR-OFP-STSO6NC	6-ST simplex (6 fibres) single-mode, metal adapters, ceramic alignment sleeves

#### Fibre Optic Adapter Panels



OR-OFP-STD12LC

Part No.	Description
OR-OFP-STD12MB	6-ST duplex (12 fibres) multimode adapters with phosphor-bronze alignment sleeves, beige
OR-OFP-STD12AC	6-ST duplex (12 fibres) single-mode adapters, ceramic alignment sleeves, blue
OR-OFP-STD12LC	6-ST duplex (12 fibres) multimode adapters, ceramic alignment sleeve, aqua adapters

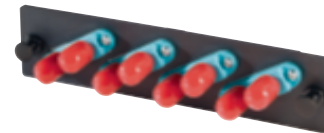
#### Fibre Optic Adapter Panels



OR-OFP-MTD12LA

Part No.	Description
OR-OFP-MTD12MA	6-MT-RJ duplex (12 fibres) feed-through, multimode, beige adapters
OR-OFP-MTD12AA	6-MT-RJ duplex (12 fibres) single-mode, blue adapters
OR-OFP-MTD12LA	6-MT-RJ duplex (12 fibres) multimode, aqua adapters

#### Fibre Optic Adapter Panels



OR-OFP-STD08LC

Part No.	Description
OR-OFP-STD08MB	4-ST duplex (8 fibres) multimode adapters, phosphor-bronze alignment sleeves, beige
OR-OFP-STD08AC	4-ST duplex (8 fibres) single-mode adapters, ceramic alignment sleeves, blue
OR-OFP-STD08LC	4-ST duplex (8 fibres) multimode adapters, ceramic alignment sleeves, aqua adapters

#### Fibre Blank Panel



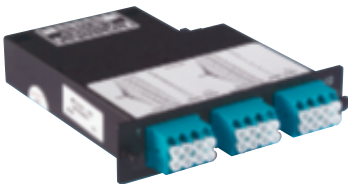
OR-OFP-BLANK

Part No.	Description
OR-OFP-BLANK	Blank panel, black

# Momentum® Cassettes

Ideal for data centres and SANs, Momentum 2 is a modular, pre-terminated cabling system that integrates high-performance optical cassettes with advanced ribbon cable in the backbone. It's simple to use, fast to install, and the connectors are factory terminated and tested. The cassettes are supported by a range of rack-mount and underfloor patch panels for convenient installation.

## Momentum Cassettes, 1 Unit



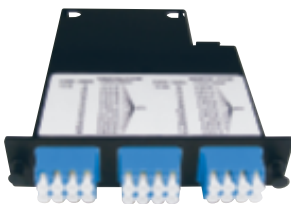
1 unit, 50/125, LOMF\* OM3.

OR-M2CLQ24-50E

Part No.	Description	Fibres
OR-M2LCQ24-50E	LC quad 2 MTP with pins	24
OR-M2LCD12-50E	LC duplex 1 MTP with pins	12
OR-M2SCD12-50E	SC duplex 1 MTP with pins	12

\* Effective Mode Bandwidth: 4900/500 (MHz-km) @ 850/1300 nm

## Momentum Cassettes, 1 Unit



1 unit, single-mode.

OR-M2LCQ24-09

Part No.	Description	Fibres
OR-M2LCQ24-09	LC quad 2 MTP with pins	24
OR-M2LCD12-09	LC duplex 1 MTP with pins	12
OR-M2SCD12-09	SC duplex 1 MTP with pins	12



Ortronics combines state-of-the-art optical ribbon cabling, industry leading MTP termination techniques, advanced LC polishing and the industry's favorite hardware to create the simplest, quickest, highest performance cassette based structured cabling system available.

### Compact, pre-terminated modular system

> Provides quick and easy deployment, adds, moves and changes, eliminating costly field installation time

### 12 and 24-fibre 1 unit modular cassettes

> Maximum port density conserves rack space

### Best-in-class 10 GBASE-SR, 10 Gig Ethernet performance

> Low insertion loss combined with ultra low differential mode delay (DMD) enhances 10 Gig performance

### Unsurpassed optical performance

> Lowest insertion loss cassette modules support high optical performance in installed links

### High fibre count backbones available

> MTP\* to MTP ribbon backbone cables offered in 12, 24, 48 and 72-fibre count options


### Common cassette mounting footprint

> Fits in all Ortronics rack mount cabinets and raised floor patch panels

\* MTP is a registered trademark of US conec

Momentum® Cables

MTP to MTP Ribbon Backbones



OFNP plenum rated.

OR-TOBLLAFFZAxxxM


Part No.	Description
OR-TOBLLAFFZAxxxM	Cable assy 12 fibre, 50/125, 2/5 GHz-km, RBN, LSZH, aqua

Note: Replace xxx with length (xxxM for ordering in metres, xxxF for ordering in feet).

\*Effective Mode Bandwidth: 2000/500 (MHz-km) @ 850/1300 nm

Contact Ortronics sales for assistance.

MTP to MTP Ribbon Backbones



OFNP plenum rated.

OR-TOBLIAFCZAxxxM

Part No.	Description
OR-TOBLIAFCZAxxxM	Cable assy 12 fibre, 9/125, RBN, LSZH, yellow

Note: Replace xxx with length (xxxM for ordering in metres, xxxF for ordering in feet).


Contact Ortronics sales for assistance.

It's the System That Counts

The performance of a fibre optic cabling system needs to be viewed from a system standpoint and not just as an assembly of individual components. The high-performance and premium-performance fibre cassettes and associated cabling products such as patch cords and MTP/MPO backbone cables are perfect examples.

The optical loss performance of a modular cassette-based MTP/MPO link is primarily affected by connector end-face polishing and connector end preparation at the factory. Therefore, it is essential that the MTP/MPO backbone cables and patch cords are prepared with a high-quality process that compliments the cassette manufacturing process, otherwise, the expected end-to-end link insertion loss performance will not be realized. Simply put, to achieve improved performance you need high performance or premium cassettes and matching backbone and patch cables.

In addition, the low DMD Gigalite 10-XB glass fibre used in all Ortronics 50 micron LOMF cassettes allow the ISI (inter-symbol interference) penalty to be reallocated to the channel budget. When used with the corresponding Gigalite 10-XB backbone MTP/MPO cables and patch cords, the system designer can realize a significant loss budget improvement that may be used for additional splices, connections or extended distances runs.





# Pre-Polished Fibre Stub Connectors

## LC Connectors Pre-Polished, 50/125, 900 Micron Buffer



OptiMo 10G field-installable LC connector for use with 50 micron multimode fibre is suitable for 10 Gigabit applications. The OptiMo 10G technology incorporates a factory-bonded fibre stub, ceramic ferrule, and precise factory polish. Designed for installation on 900 micron buffered fibre. Optional kits available for installation on 2.0 mm diameter jacketed cables (see OR-20500267).

OR-205KAS9GA-50T

Part No.	Description
OR-205KAS9GA-50T	Individually packaged
OR-205KAS9GB-50T	Package of 25

The most critical point in any optical interconnect is the physical contact interface between mated connector pairs. When polishing fibre connectors, a small lens is created at the tip of the connector and the shape of this lens critically impacts transmission of light. Using advanced laser interferometry equipment to monitor the manufacturing process, Ortronics OptiMo pre-polished field termination connectors exhibit highly controlled end-face geometry resulting in reliable, low insertion loss, minimal return loss connections. In addition, our approach eliminates imprecise epoxy application, time consuming curing, and highly variable hand polishing from field installation practices. The net effect is reduced installation expense, higher yield field terminations, and better performance.

### Factory produced connector polish

- > Reliable end-face quality

### Factory polish process monitored using advanced laser interferometry

- > Helps to ensure exacting end-face geometry parameters such as Radius of Curvature, Apex Offset and Fibre Undercut/Protrusion

### No polishing required in the field

- > Eliminates need for expensive polishing paper and fixtures

### No epoxy required

- > Eliminates need for expensive consumables, curing ovens, electric power, and reduces labour expense

### Unlimited shelf life connector

- > No need for short shelf life epoxies

### 62.5/125, laser optimised 50/125 and Single-mode options

- > OptiMo field termination technology accommodates all fibre types and is suitable for high bit rate systems such as 10 Gigabit Ethernet

### Lightweight, convenient Termination Kit

- > Small size, no electricity necessary

## LC Connectors Pre-Polished, 62.5/125, 900 Micron Buffer



OptiMo field-installable LC connector for use with 62.5 micron multimode fibre incorporates a factory-bonded fibre stub, ceramic ferrule, and precise factory polish. Designed for installation on 900 micron buffered fibre. Optional kits available for installation on 2.0 mm diameter jacketed cables (see OR-20500267).

OR-205KAS9GA-62

Part No.	Description
OR-205KAS9GA-62	Individually packaged
OR-205KAS9GB-62	Package of 25

## LC Connectors Pre-Polished, Single-mode, 900 Micron Buffer



OptiMo field-installable LC connector for use with single-mode fibre incorporates a factory-bonded fibre stub, ceramic ferrule, and precise factory polish. Designed for installation on 900 micron buffered fibre. Optional kits available for installation on 2.0 mm diameter jacketed cables (see OR-20500267).

OR-205KAS9GA-09

Part No.	Description
OR-205KAS9GA-09	Individually packaged
OR-205KAS9GB-09	Package of 25

Pre-Polished Fibre Stub Connectors

SC Connectors Pre-Polished,  
50/125, 900 Micron Buffer



OptiMo 10G field-installable SC connector for use with 50 micron multimode fibre is suitable for 10 Gigabit Ethernet (10GBASE-SR). The OptiMo 10G technology incorporates a factory-bonded fibre stub, ceramic ferrule, and precise factory polish. Designed for installation on 900 micron buffered fibre. Optional kits available for installation on 2.4 to 3.0 mm diameter jacketed cables (see OR-20500237).

OR-205KAS9FA-50T

Part No.	Description
OR-205KAS9FA-50T	Individually packaged
OR-205KAS9FB-50T	Package of 25

Note: All 50/125 field-installable connectors are suitable for use with 10 Gigabit (10GBASE-SR) systems.

SC Connectors Pre-Polished,  
62.5/125, 900 Micron Buffer



OptiMo field-installable SC connector for use with 62.5 micron multimode fibre incorporates a factory-bonded fibre stub, ceramic ferrule, and precise factory polish. Designed for installation on 900 micron buffered fibre. Optional kits available for installation on 2.4 to 3.0 mm diameter jacketed cables (see OR-20500237).

OR-205KAS9FA-62

Part No.	Description
OR-205KAS9FA-62	Individually packaged
OR-205KAS9FB-62	Package of 25

SC Connectors Pre-Polished, Single-  
mode, 900 Micron Buffer



OptiMo field-installable SC connector for use with single-mode fibre. The OptiMo technology incorporates a factory-bonded fibre stub, ceramic ferrule, and precise factory polish. Designed for installation on 900 micron buffered fibre. Optional kits are available for installation on 2.4 to 3.0 mm diameter jacketed cables (see OR-20500237).

OR-205KAS9FA-09

Part No.	Description
OR-205KAS9FA-09	Individually packaged
OR-205KAS9FB-09	Package of 25

ST Connectors Pre-Polished,  
50/125, 900 Micron Buffer



OptiMo 10G field-installable ST connector for use with 50 micron multimode fibre is suitable for 10 Gigabit Ethernet (10GBASE-SR). The OptiMo 10G technology incorporates a factory-bonded fibre stub, ceramic ferrule, and precision factory polish. Designed for installation on 900 micron buffered fibre. Optional kits are available for installation on 2.4 to 3.0 mm diameter jacketed cables (see OR-20500236).

OR-205KAS9EA-50T

Part No.	Description
OR-205KAS9EA-50T	Individually packaged
OR-205KAS9EB-50T	Package of 25

ST Connectors Pre-Polished,  
62.5/125, 900 Micron Buffer



OptiMo field-installable ST connector for use with 62.5 micron multimode fibre incorporates a factory-bonded fibre stub, ceramic ferrule, and precise factory polish. Designed for installation on 900 micron buffered fibre. Optional kits are available for installation on 2.4 to 3.0 mm diameter jacketed cables (see OR-20500236).

OR-205KAS9EA-62

Part No.	Description
OR-205KAS9EA-62	Individually packaged
OR-205KAS9EB-62	Package of 25

ST Connectors Pre-Polished,  
Single-mode, 900 Micron Buffer



OptiMo field-installable ST connector for use with single-mode fibre incorporates a factory-bonded fibre stub, ceramic ferrule, and precise factory polish. Designed for installation on 900 micron buffered fibre. Optional kits are available for installation on 2.4 to 3.0 mm diameter jacketed cables (see OR-20500236).

OR-205KAS9EA-09

Part No.	Description
OR-205KAS9EA-09	Individually packaged
OR-205KAS9EB-09	Package of 25

# Pre-Polished Accessories

## LC Accessory Kit for 2.0 Jacketed Fibre



This is the Ortronics accessory kit for use in installing LC connectors on 2.0 mm jacketed cables. Kit includes strain relief connector boot using flexible engineering rubber and a 2.0 mm crimp ring.

OR-20500267

Part No.	Description
OR-20500267	LC accessory kit for 2.0 mm jacketed cables

## SC Accessory Kit for 2.4 and 3.0 mm Jacketed Fibre



This is the Ortronics accessory kit for use in installing SC connectors on 2.4 to 3.0 mm jacketed cables. Kit includes strain relief connector boot using flexible engineering rubber, a cord adapter, a 2.4 mm crimp ring, and a 3.0 mm crimp ring.

OR-20500237

Part No.	Description
OR-20500237	Optional strain relief boot accessory kit for use in installing SC connectors on 2.4 and 3.0 mm jacketed cables

## ST Accessory Kit for 2.4 and 3.0 mm Jacketed Fibre



This is the Ortronics accessory kit for use in installing ST connectors on 2.4 to 3.0 mm jacketed cables. Kit includes strain relief connector boot using flexible engineering rubber, a 2.4 mm crimp ring, and a 3.0 mm crimp ring, and cord adapter.

OR-20500236

Part No.	Description
OR-20500236	Optional strain relief boot accessory kit for use in installing ST connectors on 2.4 and 3.0 mm jacketed cables

## OptiMo Breakout Kits



OR-61500868

Part No.	Description
OR-61500858	Breakout kit, 12 fibres
OR-61500868	Breakout kit, 6 fibres

## Pre-Polished Connectors Termination Kits



Ortronics complete OptiMo Termination Kit for installing LC, ST and SC type connectors. Kit includes installation tools, fibre cleaver, crimping tool, instruction manual, fibre preparation guide, microscope, alcohol wipes, felt tipped marker, scissors, tweezers, waste container, fibre stripper, and cable stripper.

OR-854A00000-1

Part No.	Description
OR-854A00000-1	Complete OptiMo termination kit

## Precision Fibre Optic Cleaver



Precision fibre optic cleaver (includes transit case).

OR-60300189

Part No.	Description
OR-60300189	Precision fibre optic cleaver
OR-60300190	Precision fibre optic cleave tool blade
OR-60300191	Precision fibre optic cleave tool transit case

## Type of connector locking

- > ST connector: locking by "push and turn" bayonet fitting
- > SC connector: locking by "push-pull" snap-on type
  - Suited to many types of active equipment
  - Recommended in generic standards ISO/IEC 11801 and EN 50173
  - Rectangular shape
- > LC connector: tab locking
  - Half the size of a conventional connector
  - Rectangular shape

Accessories For Pre-Polished Fibre Stub Connectors

Instruction Manuals



OptiMo installation instruction manuals.

OR-71601376

Part No.	Description
OR-71601376	For ST-type field-installable pre-stub connector
OR-71601377	For SC-type field-installable pre-stub connector
OR-71601416	For LC-type field-installable pre-stub connector

OptiMo Connector Installation Tool



OR-60300126

Part No.	Description
OR-60300126	Includes one clamp and tools compatible with OptiMo LC, SC, ST connectors

Note: ST- compatible tool shown here

Fibre Cleave Tool



OR-60300123

Part No.	Description
OR-60300123	Cleaver with preset stop

Accessory Items



OR-854A00001

Part No.	Description
OR-854A00001	80 alcohol wipes and felt tipped marker

OptiMo Crimp Tool with Die



OR-60300125

Part No.	Description
OR-60300125	OptiMo crimp tool with Die

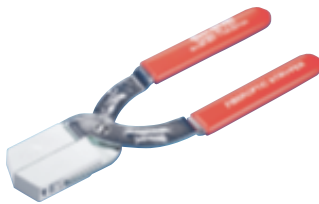
Accessory Items



OR-60300128

Part No.	Description
OR-60300128	Cleave inspection microscope

Buffer Strip Tool



OR-60300127

Part No.	Description
OR-60300124	Miller style
OR-60300127	Nick-free style (shown here)

# Anaerobic Connectors LC

## Anaerobic Connectors Multimode LC



OR-205KAN9GA-MM

Part No.	Description	Pack
OR-205KAN9GA-MM	Multimode Pre-Radius LC	1
OR-205KAN9GB-MM	Multimode Pre-Radius LC	25

## Anaerobic Connectors Single-mode LC



OR-205KAN9GA-SM

Part No.	Description	Pack
OR-205KAN9GA-SM	Single-mode Pre-Radius LC	1
OR-205KAN9GB-SM	Single-mode Pre-Radius LC	25

### Savings at every step

Optimo quick-cure, anaerobic epoxy field-installable connectors speed installation time. You'll benefit from high productivity and low connector costs-which translates directly into savings.

- > Low cost solution
- > No capital equipment
- > Fast application
- > Minimal tools
- > Flexible solution

### Savings at every step

Optimo field-installable connectors don't sacrifice performance for convenience.

- > Ceramic ferrule
- > Reliable performance
- > Single-mode or multimode
- > Pre-radius LC



# OptiMo®

## LANs, SANs, Data Centres

### Anaerobic Connectors SC & ST

#### Anaerobic Connectors Multimode SC



OR-205KAN9FA-MM

Part No.	Description	Pack
OR-205KAN9FA-MM	Multimode SC	1
OR-205KAN9FB-MM	Multimode SC	25

#### Anaerobic Connectors Multimode ST



OR-205KAN9EA-MM

Part No.	Description	Pack
OR-205KAN9EA-MM	Multimode ST	1
OR-205KAN9EB-MM	Multimode ST	25

#### Anaerobic Connectors Single-mode SC



OR-205KAN9FA-SM

Part No.	Description	Pack
OR-205KAN9FA-SM	Single-mode SC	1
OR-205KAN9FB-SM	Single-mode SC	25

#### Anaerobic Connectors Single-mode ST



OR-205KAN9EA-SM

Part No.	Description	Pack
OR-205KAN9EA-SM	Single-mode ST	1
OR-205KAN9EB-SM	Single-mode ST	25

### Termination Kits and Consumables

#### Anaerobic Field Installable Connector Termination Kit



OR-85400010

Part No.	Description
OR-85400010	Contains all tools necessary for complete OptiMo LC, ST and SC anaerobic terminations: contractor bag, micro strip tool, scribe tool, jacket strip tool, scissors, cut length templates, polishing pad, polishing pucks, microscope

#### Anaerobic Field Installable Connector Polishing Kit



OR-85400011

Part No.	Description
OR-85400011	For Single-mode: consumables necessary for complete OptiMo LC, ST and SC terminations: kemwhips, dispensing tips, syringe, type G polishing paper, type F polishing paper (terminates approx. 100 connectors)
OR-85400012	For Multimode: consumables necessary for complete OptiMo LC, ST, and SC terminations: dispensing tips, syringe, type G polishing paper, type F polishing paper, type M polishing paper (terminates approx. 100 connectors)

# Accessories for Quick-Cure Anaerobic Epoxy Connectors

## Polish Paper



OR-60300184

Part No.	Description
----------	-------------

OR-60300184	10 sheets of type F polishing paper, SM only
OR-60300185	10 sheets of type F polishing paper
OR-60300186	20 sheets of type K polishing paper

## Syringe



OR-60300183

Part No.	Description
----------	-------------

OR-60300183	Syringe 10/pk
-------------	---------------

## Dispensing Tips



OR-60300182

Part No.	Description
----------	-------------

OR-60300182	Dispensing tips 125/pk
-------------	------------------------

## Primer



OR-70600022

Part No.	Description
----------	-------------

OR-70600022	Anaerobic primer
-------------	------------------

## Adhesive



OR-70600021

Part No.	Description
----------	-------------

OR-70600021	Adhesive
-------------	----------

## Kemwhipes



OR-60300179

Part No.	Description
----------	-------------

OR-60300179	250 dry wipes
-------------	---------------

### Workstation Systems

Fib-Or-Cop II provides greater multimedia capacity, addressing the increasing need for fibre in horizontal cabling systems. This larger version of the Fib-or-Cop has the ability to mount six TracJack modules in the face, with a choice of fibre (LC, SC, ST or MT-RJ) and/or copper (TracJack) exiting from the bottom. The new design allows the cover to be removed without disrupting the copper connections. The wide variety of connectors located in the bottom positions can be further protected by an optional snap-on shroud. In addition, the Ortronics line of workstation solutions offers many alternative designs to accommodate multimedia needs for in-wall and surfacemount installations.

#### Fib-or-Cop II



OR-62100041

Part No.	Description
----------	-------------

OR-62100041	Base and cover for six TracJacks, 127 mm W x 203.2 mm H x 30.2 mm D
-------------	--

#### Fib-or-Cop II Protective Bottom Shroud



OR-62100038

Part No.	Description
----------	-------------

OR-62100038	Protective bottom shroud, package of five
-------------	---

#### Fib-or-Cop II Bottom Adapter Plates



OR-62100050

Part No.	Description
----------	-------------

OR-62100044	3-ST duplex (6 fibres) multimode, beige adapters, phosphor-bronze alignment sleeves
OR-62100045	3-ST duplex (6 fibres) single-mode, blue adapters, ceramic alignment sleeves
OR-62100046	6-SC simplex (6 fibres) multimode, beige adapters, phosphor-bronze alignment sleeves
OR-62100047	6-SC simplex (6 fibres) single-mode, blue adapters, ceramic alignment sleeves
OR-62100048	3-SC duplex (6 fibres) multimode, beige adapters, phosphor-bronze alignment sleeves
OR-62100049	3-SC duplex (6 fibres) single-mode, blue adapters, ceramic alignment sleeves
OR-62100050	6-LC duplex (12 fibres) multimode, beige adapters, phosphor-bronze alignment sleeves
OR-62100051	6-LC duplex (12 fibres) single-mode, blue adapters, ceramic alignment sleeves
OR-62100052	6-MT-RJ (12 fibres) feed-through multimode, beige adapters
OR-62100053	6-MT-RJ (12 fibres) single-mode, blue adapters

# TracJack® Modules

TracJack is a versatile single-module solution-the perfect combination of high quality, enhanced performance, labour savings, ease of use, and flexibility in design. TracJack front removable snap-in modules make moves, adds, and changes easy. All TracJack products are compatible with Fib-or-Cop II and the complete line of TracJack Faceplates and Surface Mount Boxes. TracJack modules are available in LC, SC, ST, FC, and MT-RJ styles in order to suit any installation requirement.

## TracJack Modules



1-LC (2 fibres), Multimode, 180° exit, flush, 1 unit.

OR-63700039

### Part No. Description

OR-63700039 Phosphor-bronze alignment sleeves, beige adapter  
OR-63700075 Ceramic alignment sleeves, aqua adapter

## TracJack Modules



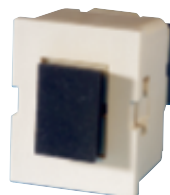
2-SC Simplex, Multimode, 180° exit, flush, 1 unit.

OR-63700066

### Part No. Description

OR-63700066 Phosphor-bronze alignment sleeves, beige adapter  
OR-63700081 Ceramic alignment sleeves, aqua adapter

## TracJack Modules



1-SC Simplex, Multimode, 180° exit, flush, 1 unit.

OR-63700017

### Part No. Description

OR-63700017 Phosphor-bronze alignment sleeves, beige adapter  
OR-63700078 Ceramic alignment sleeves, aqua adapter

## TracJack Modules



Beige adapter, phosphor-bronze alignment sleeves, 180° exit, flush, 1 unit.

OR-63700013

### Part No. Description

OR-63700013 2-ST multimode  
OR-63700011 1-ST simplex multimode

## TracJack Module



1-MT-RJ (2 fibres) Feed-through, Multimode.

OR-63700026

### Part No. Description

OR-63700026 180° exit, flush, 1 unit

## Features:

- > Snap-in module
- > Modular design
- > Front removable
- > No special tools required
- > Fully compatible with all TracJack faceplates

## Benefits:

- > Simple, secure installation
- > Flexibility in structured cabling system design
- > Facilitates quick moves, adds, and changes
- > Reduced installation expense
- > Provides wide range of design possibilities

### Physical Contact (PC) Jumpers

#### Duplex (2 fibre) Jumpers, LSZH

Multimode (62.5/125)



OR-61150D62001M23C

Part No.	Description
OR-61150D62001M77C	LC to LC, 1 m
OR-61150D62002M77C	LC to LC, 2 m
OR-61150D62003M77C	LC to LC, 3 m
OR-61150D62001M99C	SC to SC, 1 m
OR-61150D62002M99C	SC to SC, 2 m
OR-61150D62003M99C	SC to SC, 3 m
OR-61150D62001M37C	ST to LC, 1 m
OR-61150D62002M37C	ST to LC, 2 m
OR-61150D62003M37C	ST to LC, 3 m
OR-61150D62001M79C	LC to SC, 1 m
OR-61150D62002M79C	LC to SC, 2 m
OR-61150D62003M79C	LC to SC, 3 m
OR-61150D62001M33C	ST to ST, 1 m
OR-61150D62002M33C	ST to ST, 2 m
OR-61150D62003M33C	ST to ST, 3 m
OR-61150D62001M39C	ST to SC, 1 m
OR-61150D62002M39C	ST to SC, 2 m
OR-61150D62003M39C	ST to SC, 3 m
OR-61150D62001M29C	MT-RJ to SC, 1 m
OR-61150D62002M29C	MT-RJ to SC, 2 m
OR-61150D62003M29C	MT-RJ to SC, 3 m
OR-61150D62001M23C	MT-RJ to ST, 1 m
OR-61150D62002M23C	MT-RJ to ST, 2 m
OR-61150D62003M23C	MT-RJ to ST, 3 m
OR-61150D62001M22	MT-RJ to MT-RJ, 1 m
OR-61150D62002M22	MT-RJ to MT-RJ, 2 m
OR-61150D62003M22	MT-RJ to MT-RJ, 3 m

Note: LC, SC and ST cable assemblies have connectors with ceramic ferrules  
MT-RJ (no pins)

#### Duplex (2 fibre) Jumpers, LSZH

Laser optimised 50/125 OM3



OR-61150D50001M37C

Part No.	Description
OR-61150D50001M77C	LC to LC, 1 m
OR-61150D50002M77C	LC to LC, 2 m
OR-61150D50003M77C	LC to LC, 3 m
OR-61150D50001M99C	SC to SC, 1 m
OR-61150D50002M99C	SC to SC, 2 m
OR-61150D50003M99C	SC to SC, 3 m
OR-61150D50001M37C	ST to LC, 1 m
OR-61150D50002M37C	ST to LC, 2 m
OR-61150D50003M37C	ST to LC, 3 m
OR-61150D50001M79C	LC to SC, 1 m
OR-61150D50002M79C	LC to SC, 2 m
OR-61150D50003M79C	LC to SC, 3 m
OR-61150D50001M33C	ST to ST, 1 m
OR-61150D50002M33C	ST to ST, 2 m
OR-61150D50003M33C	ST to ST, 3 m
OR-61150D50001M39C	ST to SC, 1 m
OR-61150D50002M39C	ST to SC, 2 m
OR-61150D50003M39C	ST to SC, 3 m
OR-61150D50001M29C	MT-RJ to SC, 1 m
OR-61150D50002M29C	MT-RJ to SC, 2 m
OR-61150D50003M29C	MT-RJ to SC, 3 m
OR-61150D50001M23C	MT-RJ to ST, 1 m
OR-61150D50002M23C	MT-RJ to ST, 2 m
OR-61150D50003M23C	MT-RJ to ST, 3 m
OR-61150D50001M22	MT-RJ to MT-RJ, 1 m
OR-61150D50002M22	MT-RJ to MT-RJ, 2 m
OR-61150D50003M22	MT-RJ to MT-RJ, 3 m

Note: LC, SC and ST cable assemblies have connectors with ceramic ferrules  
MT-RJ (no pins)

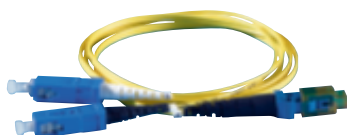
For PVC part numbers, please consult us.



# Ultra Physical Contact (UPC) Jumpers

## Duplex (2 fibre) Jumpers, LSZH

Single-mode



OR-626DC3IL-SS001M

Part No.	Description
OR-626DC3IL-SS001M	LC to LC, 1 m
OR-626DC3IL-SS002M	LC to LC, 2 m
OR-626DC3IL-SS003M	LC to LC, 3 m
OR-626DC3IL-QS001M	ST to LC, 1 m
OR-626DC3IL-QS002M	ST to LC, 2 m
OR-626DC3IL-QS003M	ST to LC, 3 m
OR-626DC3IL-RS001M	SC to LC, 1 m
OR-626DC3IL-RS002M	SC to LC, 2 m
OR-626DC3IL-RS003M	SC to LC, 3 m
OR-626DC3IL-QQ001M	ST to ST, 1 m
OR-626DC3IL-QQ002M	ST to ST, 2 m
OR-626DC3IL-QQ003M	ST to ST, 3 m
OR-626DC3IL-RR001M	SC to SC, 1 m
OR-626DC3IL-RR002M	SC to SC, 2 m
OR-626DC3IL-RR003M	SC to SC, 3 m
OR-626DC3IL-QR001M	ST to SC, 1 m
OR-626DC3IL-QR002M	ST to SC, 2 m
OR-626DC3IL-QR003M	ST to SC, 3 m
OR-626DC3IL-TT001M	FC to FC, 1 m
OR-626DC3IL-TT002M	FC to FC, 2 m
OR-626DC3IL-TT003M	FC to FC, 3 m

Note: LC, SC and ST cable assemblies have connectors with ceramic ferrules  
MT-RJ (no pins)

For PVC part numbers, please consult us.

Physical Contact (PC) Pigtails

Single (1) Connector Pigtail PVC



Multimode (62.5/125)

OR-626PA9FR-EZ001M

Part No.	Description	Fibres
OR-626PA9FR-EZ001M	1 connector pigtail, ST-PC, 1 m	1
OR-626PA9FR-EZ002M	1 connector pigtail, ST-PC, 2 m	
OR-626PA9FR-FZ001M	1 connector pigtail, SC-PC, 1 m	1
OR-626PA9FR-FZ002M	1 connector pigtail, SC-PC, 2 m	
OR-626PA9FR-GZ001M	1 connector pigtail, LC-PC, 1 m	1
OR-626PA9FR-GZ002M	1 connector pigtail, LC-PC, 2 m	
OR-626PA9ZR-DZ001M	1 connector pigtail, MT-RJ, with pins, PC, 1 m	2
OR-626PA9ZR-DZ002M	1 connector pigtail, MT-RJ, with pins, PC, 2 m	

Single (1) Connector Pigtail PVC



Laser optimised 50/125 OM3

OR-626PF9FR-EZ001M

Part No.	Description	Fibres
OR-626PF9FR-EZ001M	1 connector pigtail, ST-PC, 1 m	1
OR-626PF9FR-EZ002M	1 connector pigtail, ST-PC, 2 m	
OR-626PF9FR-FZ001M	1 connector pigtail, SC-PC, 1 m	1
OR-626PF9FR-FZ002M	1 connector pigtail, SC-PC, 2 m	
OR-626PF9FR-GZ001M	1 connector pigtail, LC-PC, 1 m	1
OR-626PF9FR-GZ002M	1 connector pigtail, LC-PC, 2 m	
OR-626PF9ZR-DZ001M	1 connector pigtail, MT-RJ, with pins, PC, 1 m	2
OR-626PF9ZR-DZ002M	1 connector pigtail, MT-RJ, with pins, PC, 2 m	



ST-PC



SC-PC



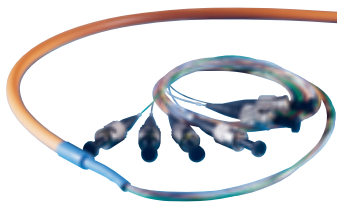
LC-PC



MT-RJ  
(with pins)

# Physical Contact (PC) Pigtails

## Six Connector Pigtails LSZH

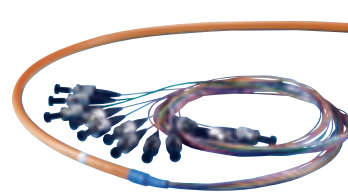


Multimode (62.5/125)

OR-626SA4ZL-EZ001M

Part No.	Description	Fibres
OR-626SA4ZL-EZ001M	6 connector pigtails, ST-PC, 1 metre	6
OR-626SA4ZL-EZ002M	6 connector pigtails, ST-PC, 2 metres	
OR-626SA4ZL-FZ001M	6 connector pigtails, SC-PC, 1 metre	6
OR-626SA4ZL-FZ002M	6 connector pigtails, SC-PC, 2 metres	
OR-626SA4ZL-GZ001M	6 connector pigtails, LC-PC, 1 metre	6
OR-626SA4ZL-GZ002M	6 connector pigtails, LC-PC, 2 metres	
OR-626TA4ZL-DZ001M	6 connector pigtails, MT-RJ-PC, 1 metre	12
OR-626TA4ZL-DZ002M	6 connector pigtails, MT-RJ-PC, 2 metres	

## Twelve Connector Pigtails LSZH



Multimode (62.5/125)

OR-626TA4ZL-EZ001M

Part No.	Description	Fibres
OR-626TA4ZL-EZ001M	12 connector pigtails, ST-PC, 1 metre	12
OR-626TA4ZL-EZ002M	12 connector pigtails, ST-PC, 2 metres	
OR-626TA4ZL-FZ001M	12 connector pigtails, SC-PC, 1 metre	12
OR-626TA4ZL-FZ002M	12 connector pigtails, SC-PC, 2 metres	
OR-626TA4ZL-GZ001M	12 connector pigtails, LC-PC, 1 metre	12
OR-626TA4ZL-GZ002M	12 connector pigtails, LC-PC, 2 metres	

## Six Connector Pigtails LSZH

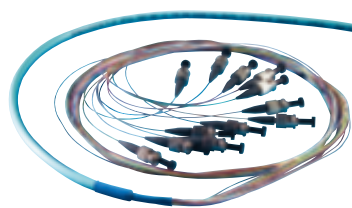


Laser optimised 50/125 OM3

OR-626SF4ZL-EZ001M

Part No.	Description	Fibres
OR-626SF4ZL-EZ001M	6 connector pigtails, ST-PC, 1 metre	6
OR-626SF4ZL-EZ002M	6 connector pigtails, ST-PC, 2 metres	
OR-626SF4ZL-FZ001M	6 connector pigtails, SC-PC, 1 metre	6
OR-626SF4ZL-FZ002M	6 connector pigtails, SC-PC, 2 metres	
OR-626SF4ZL-GZ001M	6 connector pigtails, LC-PC, 1 metre	6
OR-626SF4ZL-GZ002M	6 connector pigtails, LC-PC, 2 metres	
OR-626TF4ZL-DZ001M	6 connector pigtails, MT-RJ-PC, 1 metre	12
OR-626TF4ZL-DZ002M	6 connector pigtails, MT-RJ-PC, 2 metres	

## Twelve Connector Pigtails LSZH



Laser optimised 50/125 OM3

OR-626TF4ZL-EZ001M

Part No.	Description	Fibres
OR-626TF4ZL-EZ001M	12 connector pigtails, ST-PC, 1 metre	12
OR-626TF4ZL-EZ002M	12 connector pigtails, ST-PC, 2 metres	
OR-626TF4ZL-FZ001M	12 connector pigtails, SC-PC, 1 metre	12
OR-626TF4ZL-FZ002M	12 connector pigtails, SC-PC, 2 metres	
OR-626TF4ZL-GZ001M	12 connector pigtails, LC-PC, 1 metre	12
OR-626TF4ZL-GZ002M	12 connector pigtails, LC-PC, 2 metres	

Note: All pigtail products include a 1 meter breakout section consisting of 900 µm buffered fibre with terminated ends. LC, SC and ST cable assemblies have connectors with ceramic ferrules. For other lengths and configurations, and for FC, SC, ST and MTRJ assembly part numbers, consult Ortronics sales department.

### Ultra Physical Contact (UPC) Pigtails

#### One Connector Pigtails PVC

Single-mode

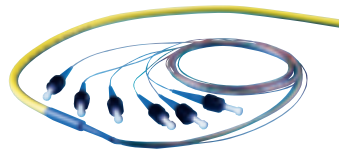


OR-626PC9FR-QZ002M

Part No.	Description
OR-626PC9FR-QZ001M	1 connector pigtail, <b>ST-UPC</b> , 1 metre
OR-626PC9FR-QZ002M	1 connector pigtail, <b>ST-UPC</b> , 2 metres
OR-626PC9FR-RZ001M	1 connector pigtail, <b>SC-UPC</b> , 1 metre
OR-626PC9FR-RZ002M	1 connector pigtail, <b>SC-UPC</b> , 2 metres
OR-626PC9FR-SZ001M	1 connector pigtail, <b>LC-UPC</b> , 1 metre
OR-626PC9FR-SZ002M	1 connector pigtail, <b>LC-UPC</b> , 2 metres

#### Six Connector Pigtails LSZH

Single-mode

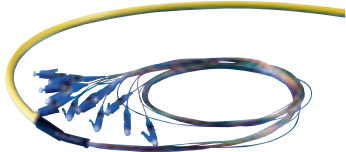


OR-626SC4ZL-QZ001M

Part No.	Description
OR-626SC4ZL-QZ001M	6 connector pigtail, <b>ST-UPC</b> , 1 metre
OR-626SC4ZL-QZ002M	6 connector pigtail, <b>ST-UPC</b> , 2 metres
OR-626SC4ZL-RZ001M	6 connector pigtail, <b>SC-UPC</b> , 1 metre
OR-626SC4ZL-RZ002M	6 connector pigtail, <b>SC-UPC</b> , 2 metres
OR-626SC4ZL-SZ001M	6 connector pigtail, <b>LC-UPC</b> , 1 metre
OR-626SC4ZL-SZ002M	6 connector pigtail, <b>LC-UPC</b> , 2 metres

#### Twelve Connector Pigtails LSZH

Single-mode



OR-626TC4ZL-SZ001M

Part No.	Description
OR-626TC4ZL-QZ001M	12 connector pigtail, <b>ST-UPC</b> , 1 metre
OR-626TC4ZL-QZ002M	12 connector pigtail, <b>ST-UPC</b> , 2 metres
OR-626TC4ZL-RZ001M	12 connector pigtail, <b>SC-UPC</b> , 1 metre
OR-626TC4ZL-RZ002M	12 connector pigtail, <b>SC-UPC</b> , 2 metres
OR-626TC4ZL-SZ001M	12 connector pigtail, <b>LC-UPC</b> , 1 metre
OR-626TC4ZL-SZ002M	12 connector pigtail, <b>LC-UPC</b> , 2 metres

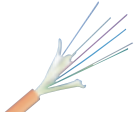
# Fibre Optic Cables

(1) Add Optimo breakout kit, 6 fibres (see p. 11). (2) Add Optimo breakout kit, 12 fibres (see p. 11).

\*The same typology of fibres with increased traction force can be ordered. Please contact your Ortronics representative.

For OM3+/OM4, please contact your Ortronics representative.

## Fibre Cables Tight



62.5/125 LSZH, OM1, reel 2100 m.  
Colour: orange.

OR-211F06TGLZ

Part No.	Description	Part No.	Description
OR-211F02TGLZ	2 fibres	OR-211F08TGLZ	8 fibres
OR-211F04TGLZ	4 fibres	OR-211F12TGLZ	12 fibres
OR-211F06TGLZ	6 fibres	OR-211F24TGLZ	24 fibres

## Fibre Cables Loose Tube\*



62.5/125 LSZH, OM1, reel 2100 m.  
Colour: orange.

OR-211F04LOLZADL

Part No.	Description
OR-211F04LOLZADL	4 fibres (1)
OR-211F06LOLZADL	6 fibres (1)
OR-211F08LOLZADL	8 fibres (2)
OR-211F12LOLZADL	12 fibres (2)
OR-211F24LOLZADL	24 fibres

## Fibre Cables Tight



50/125 LSZH, OM2, reel 2100 m.  
Colour: orange.

OR-211F024TGLZ50

Part No.	Description	Part No.	Description
OR-211F02TGLZ50	2 fibres	OR-211F08TGLZ50	8 fibres
OR-211F04TGLZ50	4 fibres	OR-211F12TGLZ50	12 fibres
OR-211F06TGLZ50	6 fibres	OR-211F24TGLZ50	24 fibres

## Fibre Cables Loose Tube\*



50/125 LSZH, OM2, reel 2100 m.  
Colour: orange.

OR-211F04LOLZAD50L

Part No.	Description
OR-211F04LOLZAD50L	4 fibres (1)
OR-211F06LOLZAD50L	6 fibres (1)
OR-211F08LOLZAD50L	8 fibres (2)
OR-211F12LOLZAD50L	12 fibres (2)
OR-211F24LOLZAD50L	24 fibres

## Fibre Cables Tight



50/125 LSZH, OM3, reel 2100 m.  
Colour: aqua.

OR-211F012TGLZ50-OM3

Part No.	Description	Part No.	Description
OR-211F02TGLZ50-OM3	2 fibres	OR-211F08TGLZ50-OM3	8 fibres
OR-211F04TGLZ50-OM3	4 fibres	OR-211F12TGLZ50-OM3	12 fibres
OR-211F06TGLZ50-OM3	6 fibres	OR-211F24TGLZ50-OM3	24 fibres

## Fibre Cables Loose Tube\*

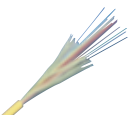


50/125 LSZH, OM3, reel 2100 m.  
Colour: aqua.

OR-211F04LOLZAD50-OM3L

Part No.	Description
OR-211F04LOLZAD50-OM3L	4 fibres (1)
OR-211F06LOLZAD50-OM3L	6 fibres (1)
OR-211F08LOLZAD50-OM3L	8 fibres (2)
OR-211F12LOLZAD50-OM3L	12 fibres (2)
OR-211F24LOLZAD50-OM3L	24 fibres

## Fibre Cables Tight



9/125 LSZH, OS1, reel 2100 m.  
Colour: yellow.

OR-211F012TGLZ9

Part No.	Description	Part No.	Description
OR-211F02TGLZ9	2 fibres	OR-211F08TGLZ9	8 fibres
OR-211F04TGLZ9	4 fibres	OR-211F12TGLZ9	12 fibres
OR-211F06TGLZ9	6 fibres	OR-211F24TGLZ9	24 fibres

## Fibre Cables Loose Tube



9/125 LSZH, OS1, reel 2100 m.  
Colour: yellow.

OR-211F04LOLZAD9

Part No.	Description
OR-211F04LOLZAD9	4 fibres (1)
OR-211F06LOLZAD9	6 fibres (1)
OR-211F08LOLZAD9	8 fibres (2)
OR-211F12LOLZAD9	12 fibres (2)
OR-211F24LOLZAD9	24 fibres





**www.ortronics.eu**

**ORTRONICS EMEA**

128 Av. Mal De Lattre De Tassigny  
87045 LIMOGES Cedex - FRANCE  
Tel : +33 (0) 5 55 06 84 27  
Fax : +33 (0) 5 55 06 74 48

**ORTRONICS FRANCE**

82 rue Robespierre  
93170 BAGNOLET - FRANCE  
Tel : +33 (0) 1 49 72 52 45  
Fax : +33 (0) 1 49 72 52 83

**ORTRONICS ITALY**

Commercial Division Of Bticino S.p.a  
5th Floor - Via Messina, 38  
20154 MILANO - ITALY  
Tel : +39 023 480 429  
Fax : +39 023 480 422  
  
Via Piramide Cestia, 1b  
00153 ROMA - ITALY  
Tel : +39 06 57 56 613  
Fax : + 39 0332 42 30 77

**ORTRONICS SPAIN**

Parque Empresarial San Fernando  
Avda. De Castilla, nº2  
Edificio Canad á - Esc. A - 1a Planta  
28830 - San Fernando de Henares  
MADRID - SPAIN  
Tel : +34 91 676 69 77  
Fax : +34 91 677 94 66  
  
Torres Cerdá  
General Almirante, 4, 4a PL, Of. C  
08014 BARCELONA - SPAIN  
Tel : +34 93 298 15 88  
Fax : +34 93 298 15 89

**ORTRONICS UK & EIRE**

Great King Street North  
BIRMINGHAM, B 19 2LF - UK  
Tel : +44 (0) 121 515 0669  
Fax : +44 (0) 121 515 0667

**ORTRONICS RUSSIA**

9/ 12, M. Simenovskaya Street  
MOSCOW - 107023 RUSSIA  
Tel : +7 (495) 660 75 56  
Fax : +7 (496) 660 75 51

**ORTRONICS GULF REGION**

LOB 15  
Office 601, Jebel Ali Free Zone  
P.O. Box 61415, DUBAI - U.A.E  
Tel : +971 4 881 6178  
Fax : +971 4 881 8145

**ORTRONICS KSA & BAHRAIN**

Al-Khobar Mall, 2nd Floor  
Office 362  
P.O. Box 927, Al-Khobar 31952 - KSA  
Tel : +966 3 887 8950  
Fax : +966 3 887 8952

**ORTRONICS POLAND**

Legrand Polska Sp. Zo.o.  
al. Wycigowa 8  
02-681 Warszawa - POLOGNE  
Tel : +(48) 22 549 2301  
Fax : +(48) 22 843 9451

**ORTRONICS CZECH REPUBLIC**

Legrand s.r.o.  
Meteor Centre Office Park  
Sokolovská 100/94  
186 00 Praha 8  
RÉPUBLIQUE TCHÈQUE  
Tel : + (420) 724 773 158  
Fax : + (420) 246 007 669

**ORTRONICS TURKEY**

Legrand Turkey  
Evliya Celebi Mah.  
Sadi Korunalp Cad. No 1  
34430 Ssishane - ISTANBUL TURKEY  
Tel : + 212 251 3430  
Fax : + 212 251 5295

**ORTRONICS ROMANIA**

Str Aromei 96 - Sector 2  
023786 BUCURESTI - ROUMANIE  
Tel : +(40) 21 243 0937  
Fax : + (40) 21 243 0775

**ORTRONICS CROATIA**

Legrand Zavrtnica 17  
10 000 ZAGHREB - CROATIE  
Tel : + 385 160 643 50  
Fax : + 385 160 643 59