

A Group brand



# STRUCTURED CABLING

## PRODUCT POCKET GUIDE





Ortronics, a group brand Legrand, is a global leader in high performance network infrastructure solutions, offering a complete range of Category 5e, 6 and 6A copper and fiber optic connectivity solutions, as well as Layer Zero® physical support solutions.

Ortronics is headquartered in New London, Connecticut, USA, and is a group brand of Legrand, the global leader in products and systems for wire and cable management worldwide.

## ORTRONICS WARRANTY PROGRAM

We offer four different warranty assurances to support our products and solutions.

### BASIC PRODUCT WARRANTY

Product repair or replacement for five (5) years from time of purchase, excluding labour costs.

### EXTENDED PRODUCT WARRANTY

Product repair or replacement for fifteen (15) years from time of purchase including labour costs.\*  
Only available for projects registered by an Ortronics Certified Installer (CI), Certified Installer Plus (CIP) or Certified Installer Plus-ESP (CIP-ESP).

### TECHCHOICE WARRANTY

Product repair or replacement for fifteen (15) years from time of purchase including labour costs.\*  
Assurance that guarantees applications designed to run over the specified cabling category will do so providing channel performance to meet current relevant standards. Only available to CIP or CIP-ESP contractors.

### CLARITY WARRANTY

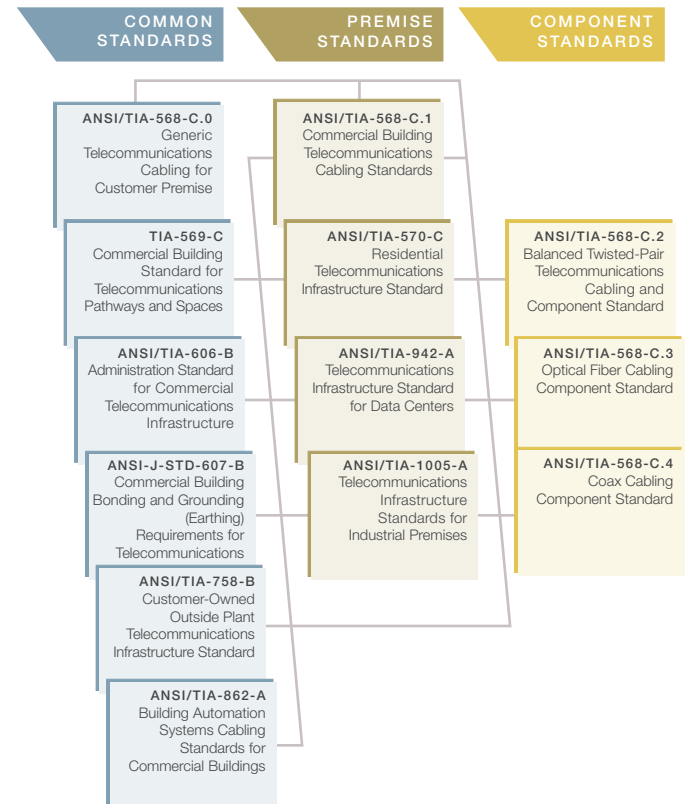
Product repair or replacement for fifteen (15) years from time of purchase including labour costs.\*  
Assurance that guarantees applications designed to run over the specified cabling category will do so and provide channel performance that exceeds current relevant standards. Only available to CIP or CIP-ESP contractors.

*\*At an agreed rate.*

## INDEX

5	TIA Standards Relationships
6 – 7	EMEA and US Standards Overview
9 – 10	Copper Jacks
11 – 15	Copper Patch Panels
16 – 17	Copper Patch Cords
18 – 19	Copper Cable
20 – 21	Faceplates
22	Workstation
23	Fibre Cabinets / Panels
24 – 25	Fibre Modules
26 – 27	Fibre Cords
28	Fibre Pigtails
29	Fibre Accessories
30 – 31	Fibre Cable
32 – 33	Mighty Mo GX
34 – 35	Mighty Mo 6
36 – 37	Mighty Mo 10
38 – 39	Mighty Mo Accessories
40 – 41	Mighty Mo Fiber Raceway
42 – 43	Mighty Mo Air Control Solutions
44	General Accessories

## TIA STANDARDS RELATIONSHIPS





## ISO/IEC 11801

The International Organization for Standardization (ISO) and the International Electrotechnical Commission (IEC) jointly oversee international standardization of telecommunications cabling.

These organizations form a specialized system for worldwide standardization.

Other major organizations in Europe for building, construction, and telecommunications codes and standards include: AFNOR (Association Francaise de Normalisation), BSI (British Standards Institution), CEI (Italian Electrotechnical Committee), CENELEC (European Committee for Electrotechnical Standardization), and ETSI (European Telecommunications Standards Institute).

Contextual relationship between EN 50173 series and other standards relevant for information technology cabling systems.

BUILDING DESIGN PHASE	GENERIC CABLING DESIGN PHASE	SPECIFICATION PHASE	INSTALLATION PHASE	OPERATION PHASE
EN 50310	EN 50173 series except EN 50173-4	EN 50174-1		EN 50174-1
6: Bonding networks	4: Structure except EN 50173-4 5: Channel performance 7: Cable requirements 8: Connecting hardware requirements 9: Requirements for cords and jumpers A: Link performance limits	4: Requirements for specifying installations of information technology cabling 5: Requirements for installers of information technology cabling		4: Requirements for specifying installations of information technology cabling
		PLANNING PHASE		
	and EN 50173-4 4 and 5: Structure 6: Channel performance 8: Cable requirements 9: Connecting hardware requirements 10: Requirements for cords and jumpers	EN 50174-2 4: Requirements for installations of information technology cabling 6: Segregation of metallic information technology cabling and power supply cabling 7: Electricity distribution systems and lighting protection	EN 50174-2 5: Requirements for installations of information technology cabling 6: Segregation of metallic information technology cabling and power supply cabling 8: Office (commercial) premises 9: Industrial premises 10: Homes 11: Data centres	
		and EN 50174-3 and (for equipotential bonding) EN 50310	and EN 50174-3 and (for equipotential bonding) EN 50310 and EN 50346 4: General requirements 5: Test parameters for balanced cabling 6: Test parameters for optical fibre cabling	



## CAT 6A FTP KEYSTONE

Rugged cast-encased Keystone jack design is durable and easy to use. Quick tool-less termination process reduces installation time. Rear load design supports quick and easy option for FTP termination.

PART NUMBER	DESCRIPTION
TKS6A	Category 6A FTP self-terminating keystone jack

*\*See page 13 for unloaded Cat 6A FTP panels.*



## CLARITY® CAT 6A / 6 FTP

Clarity shielded TracJacks® and panel jacks meet TIA Category component specifications and are precisely tuned to the terminated plug values of Clarity patch cords for optimum performance that is field measurable in the channel.

PART NUMBER	DESCRIPTION
TJS6A	Clarity 6A, Category 6A shielded jack, 8-position
TJS600	Clarity 6, Category 6 shielded jack, 8-position,
PJS6A	Clarity 6A, Category 6A shielded Panel jack, 8 positions
PJS6	Clarity 6, Category 6 shielded Panel jack, 8 positions



## CLARITY® CAT 6A / 6 UTP

Clarity TracJacks® feature the improved performance of centre tuned Cat 6A and Cat 6 connector technology.

Enhanced IDC designs make it easier to terminate while reducing the size of the jack.

PART NUMBER	DESCRIPTION
TJ6A	Clarity 6A/10G, Category 6A, 180° exit, fog white
TJ600	Clarity 6, Category 6, 180° exit, fog white

*Clarity jacks are available in the following colours:  
-00=black, -36=blue, -42=red, -43=orange, -44=yellow,  
-45=green, -68=Wiremold® gray, -88=white,  
-99=Wiremold ivory. Add tailcode to end of part number.*



## TECHCHOICE® CAT 6 / 5E UTP

TechChoice keystone jacks and modules feature an easy-to-follow universal wiring label and support standard termination using a 110-impact tool. The keystone footprint allows for flexibility in installation scheduling because of its rear insertion into the faceplate.

PART NUMBER	DESCRIPTION
KS6	Category 6, T568 A/B, fog white, pack of 25
KS5E	Category 5E, T568 A/B, fog white, pack of 25

*TechChoice jacks are available in the following colours:  
-00=black, -13= Electrical ivory, -36=blue, -42=red,  
-43=orange, -44=yellow, -45=green, -78= gray,  
-88=white, -99=Wiremold ivory. Add tailcode to end of  
part number. For individual jacks, add "A" to part number  
before colour tailcode.*



## CLARITY® HIGH DENSITY JACKS

Ortronics high density jacks incorporate patent-pending mechanical and electrical advancements, providing greater headroom, as well as a new installation mechanism. In addition, the easy to lace-and-crimp termination maintains cable performance, reduces time to install and offers a simple hand tool that contributes additional time savings. The HDJ jacks are available in Category 6A, 6 and 5E with Clarity performance that is visible in the channel. These jacks are rear loading, utilizing an innovative locking latch for quick and reliable mounting.

PART NUMBER	DESCRIPTION
OR-HDJ6A	Clarity HDJ Category 6A jack, 8 position, T568A/B, fog white
OR-HDJ6	Clarity HDJ Category 6 jack, 8 position, T568A/B, fog white
OR-HDJ5E	Clarity HDJ Category 5E jack, 8 position, T568A/B, fog white

*Clarity HDJ jacks are available in the following colours:  
-00 black, -36 blue, -42 red, -43 orange, -44 yellow,  
-45 green, -88 white. Add tailcode to end of part number.  
\*See page 15 for high density jack panels.*



## HIGH DENSITY JACK ACCESSORIES

PART NUMBER	DESCRIPTION
OR-HDJHCT	HDJ handled crimping tool
OR-HDJTJA20	HD TracJack mounting adapter bezel, pack of 20, fog white
OR-HDJB20	HD jack blank, pack of 20, fog white
OR-HDJB20-00	HD jack blank, pack of 20, black



## CLARITY® CAT 6A / 6 UTP

Clarity patch panels combine the Ortronics commitment to ease and reliability with the ETL verified TIA-568C.2 performance of centre tuned connector technology. Panels provide extensive designation abilities, icon compatibility and complete rear cable management to assist in dressing cables and fixing screws. This range is also available in an angled finish to increase cabinet density.

PART NUMBER	DESCRIPTION
PHD6AU24	Clarity 6A/10G, Category 6A, 24 port, 1U, flat
PHA6AU24	Clarity 6A/10G, Category 6A, 24 port, 1U, angled
PHD6AU48	Clarity 6A/10G, Category 6A, 48 port, 2U, flat
PHA6AU48	Clarity 6A/10G, Category 6A, 48 port, 2U, angled
PHD66U24	Clarity 6, Category 6, 24 port, 1U, flat
PHA66U24	Clarity 6, Category 6, 24 port, 1U, angled
PHD66U48	Clarity 6, Category 6, 48 port, 2U, flat
PHA66U48	Clarity 6, Category 6, 48 port, 2U, angled



## CAT 6A FTP KEYSTONE

Modular shielded panels come either complete with modules or unloaded (order Ortronics TKS6A to go with unloaded panel). Rear management bar to assist in dressing cables and easing installation is included.

PART NUMBER	DESCRIPTION
PHDTKS6A24	Category 6A, 24 port, 1U, flat, with jacks
PHATKS6A24	Category 6A, 24 port, 1U, angled, with jacks
PHDTKS6A48	Category 6A, 48 port, 2U, flat, with jacks
PHATKS6A48	Category 6A, 48 port, 2U, angled, with jacks
PHDTKSU24	24 port, 1U, flat, unloaded*
PHATKSU24	24 port, 1U, angled, unloaded*
PHDTKSU48	48 port, 2U flat, unloaded*
PHATKSU48	48 port, 2U angled, unloaded*

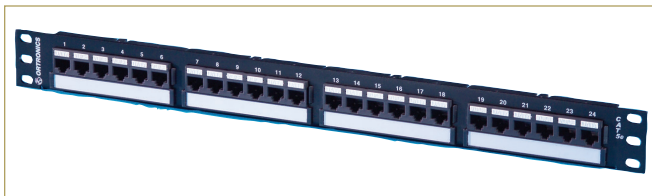
*\*See page 9 for Cat 6A FTP Keystone jacks.*



## CLARITY® CAT 6A FTP

Clarity shielded panels offer rear loading shielded 110-terminated jacks to support improved ease of termination and installation from the back of the panel.

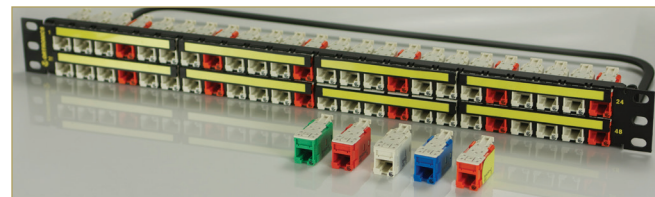
PART NUMBER	DESCRIPTION
PHDPJS6A24	Clarity 6A, Category 6A FTP, 24 port, 1U, flat, with jacks



## TECHCHOICE® CAT 6 / 5E UTP

24- and 48-port TechChoice patch panels are available in the traditional multi-port panel format with 6-port modules.

PART NUMBER	DESCRIPTION
SP6U24	Category 6, 24 port, 1U, flat
SPA6U24	Category 6, 24 port, 1U, angled
SP6U48	Category 6, 48 port, 2U, flat
SPA6U48	Category 6, 48 port, 2U, angled
SP5EU24	Category 5E, 24 port, 1U, flat
SPA5EU24	Category 5E, 24 port, 1U, angled
SP5EU48	Category 5E, 48 port, 2U, flat
SPA5EU48	Category 5E, 48 port, 2U, angled



## CLARITY® HIGH DENSITY PANELS

The HDJ series of jacks is supported by high density flat or angled panel options, which includes 24 port (1RU), 48 port (1RU) and 72 port (2RU) sizes. All panels are supplied with rear cable management bars, straps and ties.

*Support up to 48 ports in 1 rack unit (1RU) cabinet density.*

PART NUMBER	DESCRIPTION
OR-PHAHJU24	24 port angled HDJ jack panel, unloaded 1.75" x 19", 1RU
OR-PHAHJU48	48 port angled HDJ jack panel, unloaded 1.75" x 19", 1RU
OR-PHAHJU72	72 port angled HDJ jack panel, unloaded 3.5" x 19", 2RU
OR-PHDHJU24	24 port flat HDJ jack panel, unloaded 1.75" x 19", 1RU
OR-PHDHJU48	48 port flat HDJ jack panel, unloaded 1.75" x 19", 1RU
OR-PHDHJU72	72 port flat HDJ jack panel, unloaded 3.5" x 19", 2RU

*\*See page 11 for high density jacks.*



## CLARITY® CAT 6A / 6 FTP

Clarity shielded cords incorporate a flexible snagless plug design that provides proper bend relief to ensure optimal performance. They meet TIA component specifications to centre tuning. These cords provide a significant elevation of channel performance that can be field measured.

*All Clarity cords are low smoke zero halogen (LSZH)  
– PVC is available upon request.*

PART NUMBER	DESCRIPTION
MCSZ1010M-xx	Category 6A FTP, 1M, LSZH
MCSZ1020M-xx	Category 6A FTP, 2M, LSZH
MCSZ1030M-xx	Category 6A FTP, 3M, LSZH
MCSZ1050M-xx	Category 6A FTP, 5M, LSZH
MCSZ610M-xx	Category 6 FTP, 1M, LSZH
MCSZ620M-xx	Category 6 FTP, 2M, LSZH
MCSZ630M-xx	Category 6 FTP, 3M, LSZH
MCSZ650M-xx	Category 6 FTP, 5M, LSZH

*Clarity 6A and Clarity 6 shielded cords are available in the following colours: -02=red, -04=yellow, -05=green, -05=blue, -08=gray. Replace xx with proper tailcode.*



## CLARITY® CAT 6A / 6 UTP

Clarity modular patch cords are ETL verified to component standards, while providing elevated field-measurable channel performance.

PART NUMBER	DESCRIPTION
MCZ61010M-xx	Category 6A UTP, 1M, LSZH
MCZ61020M-xx	Category 6A UTP, 2M, LSZH
MCZ61030M-xx	Category 6A UTP, 3M, LSZH
MCZ61050M-xx	Category 6A UTP, 5M, LSZH
MCZ610M-xx	Category 6 UTP, 1M, LSZH
MCZ620M-xx	Category 6 UTP, 2M, LSZH
MCZ630M-xx	Category 6 UTP, 3M, LSZH
MCZ650M-xx	Category 6 UTP, 5M, LSZH

*Clarity 6A and 6 cords are available in the following colours: -02=red, -05=green, -06=blue, -08=gray, -09=white. Replace xx with proper tailcode.*



## TECHCHOICE® CAT 6 / 5E UTP

TechChoice patch cords offer a slim design for high density applications and come factory terminated with a snagless boot. Each cable is pre-tested for component performance. PVC only.

PART NUMBER	DESCRIPTION
SPC603-xx	Category 6, UTP, 3ft, pack of 10
SPC607-xx	Category 6, UTP, 7ft, pack of 10
SPC610-xx	Category 6, UTP, 10ft, pack of 10
SPC615-xx	Category 6, UTP, 15ft, pack of 10
SPC5E03-xx	Category 5E UTP, 3ft, pack of 10
SPC5E07-xx	Category 5E UTP, 7ft, pack of 10
SPC5E10-xx	Category 5E UTP, 10ft, pack of 10
SPC5E15-xx	Category 5E UTP, 15ft, pack of 10

*TechChoice cords are available in the following colours: -00=black, -02=red, -04=yellow, -05=green, -06=blue, -08=gray, -09=white. Replace xx with proper tailcode. For individual patch cords, add "A" after "SPC" in part number.*





## CAT 6A FTP

Clarity® Category 6A U/FTP 100Ω data cable, 4 twisted pairs, individually shielded, low smoke and zero halogen sheathed for indoor installations.

*Jacket colour: yellow.*

*500M reel.*

### PART NUMBER

100UF6AH-EU-04

## CAT 6 FTP

Clarity® Category 6 U/FTP 100Ω data cable, 4 twisted pairs, individually shielded, low smoke and zero halogen sheathed for indoor installations.

*Jacket colour: green.*

*500M reel.*

### PART NUMBER

100UF6H-EU-05

## CAT 6A UTP

Clarity Category 6A, 100Ω, 4 twisted pairs, low smoke and zero halogen sheathed, data cable for indoor installations.

*Jacket colour: green.*

*500M reel.*

### PART NUMBER

100UC6AH-EU-04

## CAT 6 UTP

Clarity Category 6, 100Ω, 4 twisted pairs, low smoke and zero halogen sheathed, data cable for indoor installations.

*Jacket colour: green.*

*305M reel in box.*

### PART NUMBER

100UC6H-EU-05

## CAT 5E UTP

Category 5E, 100Ω, 4 twisted pairs, low smoke and zero halogen sheathed, data cable for indoor installations.

*Jacket colour: white.*

*305M reel in box.*

### PART NUMBER

100UC5EH-EU-09



## UK

Synergy TracJack® faceplates are perfectly matched with the Synergy range of wiring devices available from Legrand Electric, giving you the option to perfectly match all the faceplates in your office or home.



Complete with integral shutters/fixing screws and screw covers.

*6C TracJack bezel with integral shutter.*

PART NUMBER	DESCRIPTION
40300745P-88	Single gang, 1 jack
40300746P-88	Single gang, 2 jack
40300747P-88	Double gang, 4 jack
42100018P-88	6C single bezel



## FRANCE

Programme Mosaic adapters for TracJack are all rear load and come in 2 varieties, flush and indented.

PART NUMBER	DESCRIPTION
FPK1TJ	22.5 x 45mm flush single
FPK2TJ	45 x 45mm flush double
FPIK2TJ	22.5 x 45mm indented single



## ITALY

Ortronics offers a range of adapter/bezels designed to fit faceplates from BTicino, a division of the Legrand Group. Three main faceplate offerings—Magic, Living, and Light. All adapters/bezels hold one TracJack.

PART NUMBER	DESCRIPTION
42100022	Magic adapter, pack of 10
40300590	Living int adapter, pack of 10
40300591	Light adapter, pack of 10
ADAPTMATIX	Matix adapter, pack of 10



## TECHCHOICE® ADAPTERS/BEZELS

For the TechChoice keystone range of connectors. All adapter/bezels hold one TechChoice or Keystone Jack.

The UK bezel is a 6Ce foot print.

The French Bezel is a 45 x 45mm Mosaic.

For Italy we have range of adapter/bezels designed to fit BTicino 3 main face plate offerings—Magic, Living, and Light.

PART NUMBER	DESCRIPTION
KSB6CE	UK bezel
FPMK1TC	Mosaic
KSLVJA	Living
KSLTJA	Light, pack of 10
KSBMAA	Magic



## COPPER WORKSTATION

Ortronics® TracJack® and TechChoice® surface mount boxes are available to house two and four TracJacks.



Bases are easily installed with supplied screws or double-sided adhesive. Snap-on covers have recessed label fields. Boxes are ruggedly constructed from high impact thermo-plastic.

*94V-0 rated.*

*TracJack blanks are also available.*

*These surface mount boxes are also available for the TechChoice TC range.*



PART NUMBER	DESCRIPTION
404TJ2-88	2 x TJ surface mount
404TJ4-88	4 x TJ surface mount
42100002-88	TracJack blanks
KSSMB2	2 x TC surface mount
KSSMB4	4 x TC surface mount



The Jak-Pak is a compact, flexible, multi-user solution that can be structurally mounted or used in more temporary environments. Kits come supplied with 6 port module and heat shrink.

PART NUMBER	DESCRIPTION
JP66U	Clarity Jac-Pak mount



## CABINETS

Each fibre cabinet offers complete flexibility allowing the ability to patch and splice in the same cabinet. Each cabinet has optimized cable entry and exit points, allows access to terminations from front and rear, and accommodates the unique needs of optical fibre bend radius limitation through enhanced patch cord management devices and novel internal fibre management components.

PART NUMBER	DESCRIPTION
FC01U-C	1U, holds 3 adapter panel
FC02U-C	2U, holds 6 adapter panel



## PANELS

The rack mount fibre panel is ideally suited for both large and small fibre installations offering complete flexibility in terms of cable entry and exit, access to front, rear, and top, and accommodation for the unique needs of optical fibre bend radius limitation through enhanced patch cord management devices and innovative internal fibre management components.

PART NUMBER	DESCRIPTION
61500569-00	1U, holds 3 adapter panel



## SC AND LC MODULES

The Ortronics® OptiMo® OFP series adapter panels are used with our popular FC Series modular fibre cabinets, offering great flexibility in structured cabling design. Front-removable adapter panels are available with LC or SC modules and feature options ideal for both single mode and multimode applications. They are held securely in place with plunger/grommet fasteners. Where applicable, the adapters used (LC and SC) contain application specific alignment sleeves to ensure optimal performance in conjunction with the economic constraints of network design. For multimode applications, phosphor-bronze (metal) alignment sleeves are commonly utilized, while most single mode adapters contain ceramic alignment sleeves ensuring dependable transmission in demanding single mode applications.



### PART NUMBER

### DESCRIPTION

OFP-SCD06MB	3 SC duplex MM beige
OFP-SCD06AC	3 SC duplex SM blue
OFP-SCD06LC	3 SC duplex MM aqua
OFP-SCD12MB	6 SC duplex MM beige
OFP-SCD12AC	6 SC duplex SM blue
OFP-SCD12LC	6 SC duplex MM aqua
OFP-BLANK	Blank panel



### PART NUMBER

### DESCRIPTION

OFP-LCD12MB	6 LC duplex MM beige
OFP-LCD12AC	6 LC duplex SM blue
OFP-LCD12LC	6 LC duplex MM aqua
OFP-LCQ24MB	6 LC quad MM beige
OFP-LCQ24AC	6 LC quad SM blue
OFP-LCQ24LC	6 LC quad MM aqua
OFP-BLANK	Blank panel



## 50/125µm OM3 PATCH CORDS

Ortronics® has developed the best connectors in the industry for our fibre system components.

Ortronics fibre patch cords can be ordered in various lengths with any standard connector.

All cords are LSZH. PVC is available on request.

All cords are duplex, coloured aqua.

PC/LSZH, 2mm zip cord.

*Insertion loss maximum 0.50 dB per connection.*

PART NUMBER	DESCRIPTION
P1DF2LLGZGZ001M	LC-PC to LC-PC 1M
P1DF2LLGZGZ002M	LC-PC to LC-PC 2M
P1DF2LLGZGZ003M	LC-PC to LC-PC 3M
P1DF2LLFZFZ001M	SC-PC to SC-PC 1M
P1DF2LLFZFZ002M	SC-PC to SC-PC 2M
P1DF2LLFZFZ003M	SC-PC to SC-PC 3M
P1DF2LLFZGZ001M	LC-PC to SC-PC 1M
P1DF2LLFZGZ002M	LC-PC to SC-PC 2M
P1DF2LLFZGZ003M	LC-PC to SC-PC 3M

*Please contact Ortronics for additional lengths and connector configurations.*



## SINGLE MODE PATCH CORDS

Ortronics® has selected the best connectors in the industry for our fibre system components.

Ortronics fibre patch cords can be ordered in various lengths with any standard connector.

All cords are LSZH. PVC is available on request.

All cords are duplex, coloured yellow.

UPC/LSZH, 2mm zip cord.

*Insertion loss maximum 0.30 dB per connection.*

PART NUMBER	DESCRIPTION
P1DC2ILSZSZ001M	LC-UPC to LC-UPC 1M
P1DC2ILSZSZ002M	LC-UPC to LC-UPC 2M
P1DC2ILSZSZ003M	LC-UPC to LC-UPC 3M
P1DC2ILRZRZ001M	SC-UPC to SC-UPC 1M
P1DC2ILRZRZ002M	SC-UPC to SC-UPC 2M
P1DC2ILRZRZ003M	SC-UPC to SC-UPC 3M
P1DC2ILRZSZ001M	LC-UPC to SC-UPC 1M
P1DC2ILRZSZ002M	LC-UPC to SC-UPC 2M
P1DC2ILRZSZ003M	LC-UPC to SC-UPC 3M

*Please contact Ortronics for additional lengths and connector configurations.*

## OM3 BULK FIBRE OPTIC CABLE – TIGHT BUFFERED

900 micron tight buffered, multi-fibre, bend-optimized OM3 fibre distribution cable for indoor/outdoor applications.

*Jacket colour: aqua LSZH.*

*2,100M reel.*

PART NUMBER	DESCRIPTION
211F4TGLZOM3	4 fibre
211F6TGLZOM3	6 fibre
211F8TGLZOM3	8 fibre
211F12TGLZOM3	12 fibre
211F24TGLZOM3	24 fibre

## OM3 BULK FIBRE OPTIC CABLE – LOOSE BUFFERED

Loose tube, gel-filled, multi-fibre, bend-optimized OM3 fibre cable for outdoor applications.

*Jacket colour: black LLDPE.*

*2,100M reel.*

PART NUMBER	DESCRIPTION
211F4LZAD0M3L	4 fibre
211F6LZAD0M3L	6 fibre
211F8LZAD0M3L	8 fibre
211F12LZAD0M3L	12 fibre
211F24LZAD0M3L	24 fibre

## OM4 BULK FIBRE OPTIC CABLE – TIGHT BUFFERED

900 micron tight buffered, multi-fibre, bend-optimized OM4 fibre distribution cable for indoor/outdoor applications.

*Jacket colour: aqua LSZH.*

*2,100M reel.*

PART NUMBER	DESCRIPTION
211F4TGLZOM4	4 fibre
211F6TGLZOM4	6 fibre
211F8TGLZOM4	8 fibre
211F12TGLZOM4	12 fibre
211F24TGLZOM4	24 fibre

## OM4 BULK FIBRE OPTIC CABLE – LOOSE BUFFERED

Loose tube, gel-filled, multi-fibre, bend-optimized OM4 fibre cable for outdoor applications.

*Jacket colour: black LLDPE.*

*2,100M reel.*

PART NUMBER	DESCRIPTION
211F4LZAD0M4L	4 fibre
211F6LZAD0M4L	6 fibre
211F8LZAD0M4L	8 fibre
211F12LZAD0M4L	12 fibre
211F24LZAD0M4L	24 fibre



## OS2 SINGLE MODE BULK FIBRE OPTIC CABLE – TIGHT BUFFERED

900 micron tight buffered, multi-fibre, bend-optimized OS2 fibre distribution cable for indoor/outdoor applications.

*Jacket colour: aqua LSZH.*

*2,100M reel.*

PART NUMBER	DESCRIPTION
211F4TGLZ9	4 fibre
211F6TGLZ9	6 fibre
211F8TGLZ9	8 fibre
211F12TGLZ9	12 fibre
211F24TGLZ9	24 fibre

## OS2 SINGLE MODE BULK FIBRE OPTIC CABLE – LOOSE BUFFERED

Loose tube, gel-filled, multi-fibre, bend-optimized OS2 fibre cable for outdoor applications.

*Jacket colour: black LLDPE.*

*2,100M reel.*

PART NUMBER	DESCRIPTION
211F4LZAD9	4 fibre
211F6 LZAD9	6 fibre
211F8LZAD9	8 fibre
211F12LZAD9	12 fibre
211F24LZAD9	24 fibre



## SINGLE PIGTAILS

Available in OM3 and single mode.

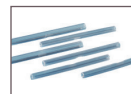
All pigtail products include a 1 meter breakout section consisting of 900  $\mu\text{m}$  buffered fibre with terminated ends. LC & SC cable assemblies have connectors with ceramic ferrules. Pigtails are LSZH.

Insertion loss maximum 0.50 dB per connection for multimode and 0.30 dB maximum for single mode.

PART NUMBER	DESCRIPTION
P1PF9FLFZZZ001M	OM3 SC-PC 1M
P1PF9FLFZZZ002M	OM3 SC-PC 2M
P1PF9FLGZZZ001M	OM3 LC-PC 1M
P1PF9FLGZZZ002M	OM3 LC-PC 2M
P1PC9FLRZZZ001M	SM SC-UPC 1M
P1PC9FLRZZZ002M	SM SC-UPC 2M
P1PC9FLSZZZ001M	SM LC-UPC 1M
P1PC9FLSZZZ002M	SM LC-UPC 2M

Please contact Ortronics for additional lengths, fiber counts and connector configurations.

## ACCESSORIES



### HEAT SHRINK SPLICE PROTECTOR SLEEVES

Available in 2 lengths.

Pack of 50.

PART NUMBER	DESCRIPTION
20500043	40mm Heat shrink sleeve
20500130	60mm Heat shrink sleeve



### FIBRE SPLICE TRAY FOR 12 SPLICES.

Transparent stackable design with hinged cover and mylar insert. Ideal for VFL verifications.

PART NUMBER	DESCRIPTION
FST2-F012	Use with FC fibre enclosures
61500016	Use with 615 fibre enclosures



## MIGHTY MO® GX CABINETS

Mighty Mo GX cabinets are fully modular and configurable to suit the needs of any installation. Each cabinet can be assembled with as few or as many accessories as needed to properly support servers, switches and patch panels. The cabinets are designed to stand alone or easily gang together, as network demands increase.

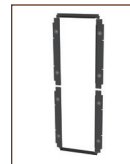
## PRECONFIGURATIONS

PART NO.	DESCRIPTION
GXC422442-A1-B	Server cabinet assembly, 42U x 24"W x 42"D, black
GXC422942-A1-B	Network cabinet assembly, 42U x 29.5"W x 42"D, black



## CABLE MANAGEMENT

PART NO.	DESCRIPTION
GXC29WMK-5	Wire manager kit, set of (5) 29.5"W frames, black
GXC4206VWT-B	Vertical wire trellis, 42U, 6"W, black
GXC42VFK	Vertical finger kit, 42U, for (1) vertical rail
GXC42VPMLD	Vertical lacing bar/PDU management bar 42U, double wide, black
GXC42VPMLS	Vertical lacing bar/PDU management bar 42U, single wide, black



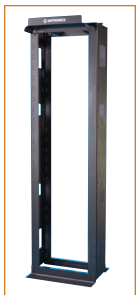
## ACCESSORIES

PART NUMBER	DESCRIPTION
GXC4229ADK-B	Air dam kit, for 42U x 29.5"W frames, black
GXC4229SPB-B	Side patching baffle, for 42U x 29.5"W frames, black
MM6BLC	Bend limiting clips
PS-1224CN	Cage nuts
60400533	Screws



## BAFFLES

PART NUMBER	DESCRIPTION
GXCAB421629	Baffle, for 42U x 29.5"W frame with management angles 16.25"
GXCAB421629SA	Baffle, for 42U x 29.5"W with management angles 16.25" with SPI
GXCAB423029	Baffle, for 42U x 29.5"W frame with management angles 30"
GXCAB423029SA	Baffle, for 42U x 29.5"W with management angles 30" with SPI



## MIGHTY MO® 6 RACK

Mighty Mo 6 racks are available in 6.5," 10.5" and 16.25" channel depths. The 16.25" size is designed specifically for large and heavy network equipment. The bottom flange on the 16.25" standard rack turns inward, allowing it to fit on a 2' x 2' floor tile.

PART NO.	DESCRIPTION
MM6710	7ft (45U), 10.5" channel depth
MM6810	8ft (51U), 10.5" channel depth



## MIGHTY MO 6 VERTICAL MANAGER

Hinged doors allow easy access during moves, adds, and changes. 10" wide cage creates a 6.5" gap between racks. 6" wide cage creates a 2.5" gap between racks for front-to-back routing of equipment cables and patch cords. Both are supplied with four spools and 12 bend-limiting clips.

*Colour is black.*

PART NO.	DESCRIPTION
MM6VMD706	7ft, 6" wide with door
MM6VMD806	8ft, 6" wide with door
MM6VMD710	7ft, 10" wide with door
MM6VMD810	8ft, 10" wide with door

*MM6VMD's can be used with the MM10 racks.*

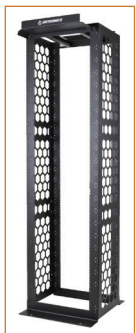


## MIGHTY MO END PANELS

The end panel is used to finish the end of a row of Mighty Mo racks. It mounts flush and provides a surface for the vertical cable management channel while concealing cables in the rack channel.

*Colour is black.*

PART NUMBER	DESCRIPTION
MM6EP710	7ft, 10.25" channel depth
MM6EP810	8ft, 10.25" channel depth
MM6EPN716	7ft, 16.25" channel depth
MM6EPN816	8ft, 16.25" channel depth
MM10EPS	End panel support brace



## MIGHTY MO® 10 RACK

Designed to maximize the airflow of network equipment. The patent designed honeycomb side rails and baffles combine to manage intake and exhaust air creating cold aisle/hot aisle air distribution from side vented equipment. The bottom flange turns inward, allowing it to fit on a 2'x2' floor tile.

*Colour is black.*

PART NUMBER	DESCRIPTION
MM10716	7ft (45U) 16.25" channel depth
MM10816	8ft (51U) 16.25" channel depth



## MIGHTY MO 10 VERTICAL MANAGER

Hinged doors allow easy access. 16" wide cage creates a 12.25" gap between racks. 12" wide cage creates a 8.25" gap between racks for front-to-back routing of cables and patch cords. Angled section at the rear allows for fitting of baffle kit if required.

*Both are supplied with four spools and 12 bend-limiting clips. Colour is black.*

PART NUMBER	DESCRIPTION
MM10VMD712	7ft 12" wide with door
MM10VMD812	8ft 12" wide with door
MM10VMD716	7ft 16" wide with door
MM10VMD816	8ft 16" wide with door



## MIGHTY MO 10 SERVER

The Mighty Mo 10 server rack works with all of the Mighty Mo 6 and 10 racks and cable management. The mounting rails adjust from 12.5" to 30," independent of the structural members allowing the rails to be adjusted after the rack is installed.

*Mighty Mo vertical managers can be mounted front or rear.*

*Colour is black.*

PART NUMBER	DESCRIPTION
MM107SVR	7ft (45U) server rack
MM108SVR	8ft (51U) server rack
MM107SVRABR	7ft baffle rail kit
MM108SVRABR	8ft baffle rail kit



## MIGHTY MO BAFFLE KITS

Mighty Mo 10 airflow baffles mount between racks and direct intake and exhaust air on side flow network equipment from cold aisle to hot aisle.

*Colour is black.*

*Please ensure correct baffle to VMD combination.*

PART NUMBER	DESCRIPTION
MM10AB71612	Use with MM10VMD712
MM10AB81612	Use with MM10VMD812
MM10AB71616	Use with MM10VMD716
MM10AB81616	Use with MM10VMD816



## MIGHTY MO® HORIZONTAL MANAGEMENT

Ortronics® Mighty Mo cable management panels are optimized to organize patch cords vertically and horizontally on our Mighty Mo racks. They will also mount on any standard 19" rack. The finger design encourages defined and traceable routing of individual patch cords.

PART NUMBER	DESCRIPTION
-------------	-------------

MM6HMF1RU	Multi finger 1U
MM6HMF2RU	Multi finger 2U
MM6HMF1RU	5 finger 1U
MM6HMF2RU	5 finger 2U



## CABLE MANAGEMENT

Ortronics cable management panels provide organized movement of patch cables horizontally and vertically on 19" EIA distribution racks.

PART NUMBER	DESCRIPTION
-------------	-------------

808004759	5 horizontal ring top entry 1U
808045590	5 horizontal ring front entry 1U
808044855	4 horizontal, 4 vertical, 24 dist rings 2U



## BLANK FILLER PLATES

Ortronics blank filler panels fill in open spaces on all standard 19" EIA racks. They are available in two options: a black powder coated aluminum angled version and a flat toolless plastic snap-in version.

*Colour is black.*

PART NUMBER	DESCRIPTION
-------------	-------------

BFPA-1RU	1U angled blank
BFPA-2RU	2U angled blank
BFPT-1RU-10	1U toolless blank, pack of 10
BFPT-2RU-10	2U toolless blank, pack of 10

## PANEL MOUNTING SCREWS

Replace lost or damaged screws for patch panels and cable management panels. These combination head screws with #12-24 threads have a pilot point for easy starting.

PART NUMBER	DESCRIPTION
-------------	-------------

40300533	Pack of 50 screws
----------	-------------------



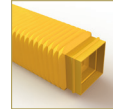
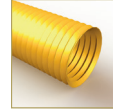
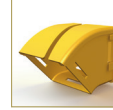
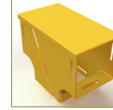
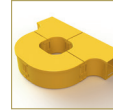
## BASE DUST COVER

Prevents dust and debris from accumulating in rack base. Scored for bending to clear cables from floor up to channel.

PART NUMBER	DESCRIPTION
-------------	-------------

MM6BDC16	Cover for 16.25" deep rack
----------	----------------------------





## MIGHTY MO® FIBER RACEWAY

Ortronics Mighty Mo Fiber Raceway provides an easy to install, flexible plastic solution that's ideal for routing fibre above racks and cabinets. Fiber Raceway provides a path for critical network cabling in a variety of environments, including telecommunications exchanges, data centres, universities and hospitals.

### Features and Benefits

- Made from Noryl®, a halogen free, fire retardant, metal free, zero dust plastic
- All standard parts are delivered "slotted" for easy installation
- Easy installation joiners snap together all system components
- Available with and without covers
- Breakouts can be easily and safely added, even after fibre cables are installed
- RoHS compliant
- UL2024A standard certified

### Product Offering

- Range
  - 260 SKUs
  - 22 categories of duct and fittings
  - 4 tool styles
- Sizes
  - 5 sizes available
  - 2"x2" up to 12"x4"
  - All 6' 6-3/4" long
- Colours
  - Yellow is standard
  - Orange and black available by special order



## MIGHTY MO® AIR CONTROL

Mighty Mo Air Control solutions improve data centre cooling efficiency and reduce cooling requirements by separating hot and cold aisles.

## MIGHTY MO AIR CURTAINS

Mighty Mo Air Curtains are fire resistant hanging vinyl panels that mount to aluminum tracks that hang from the ceiling via heat release fusible links.

PART NUMBER	DESCRIPTION
MMACNPXXxYY	Vinyl panel kit, XX"H x YY"L

Available heights(XX)=29, 56, 98, 110, 122, 146, 182.

Available lengths(YY)=12, 24, 36, 48, 60, 72.

MMACNCPXXx12	Vinyl corner panel kit, XX"H x 12"L
--------------	-------------------------------------

Available heights(XX)=29, 56, 98, 110, 122, 146, 182.

MMACNSXXxYY	Vinyl strip door kit, XX"H x YY"L
-------------	-----------------------------------

Available heights(XX)= 98, 110, 122, 146, 182.

Available lengths(YY)=12, 24, 36, 48, 60, 72.

Standard product kits include fusible links for 1" drop ceiling. For unistrut compatible vinyl kits add a "U" before the dimensions in the part number ex. MMACNPUXXxYY.



## MIGHTY MO AIR PLUGS

Mighty Mo Air Plugs are soft compressible fireproof cubes that are used to block airflow through openings in floors and cabinets.

PART NUMBER	DESCRIPTION
MMAPLXXYY	Air plug, 5" x XX" x YY", black

Available widths(XX) = 4, 6, 9, 12, 14, 16, 18, 20, 24.

Available lengths(YY) = 4, 6, 9, 12, 14, 16, 18, 20, 24.

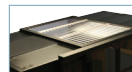
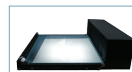


## MIGHTY MO AIR CONTROL DOORS

Mighty Mo Air Control Doors are installed with vinyl panels or roof systems to provide containment at the end of a row of cabinets or racks.

PART NUMBER	DESCRIPTION
MMALDRS80X89DL	Air door, sliding, 80"H x 89"W, dual 24" with doors, clear
MMALDRS80X89LH	Air door, sliding, 80"H x 89"W, single 36" with door, left, clear
MMALDRS80X89RH	Air door, sliding, 80"H x 89"W, single 36" with door, right, clear
MMALDRH80X56LH	Air door, hinged, 80"H x 56"W, left hand open, clear
MMALDRH80X56RH	Air door, hinged, 80"H x 56"W, right hand open, clear

Standard door frame color is clear aluminum. For Black, add a "-B" to the end of the part number. Custom sizes available.



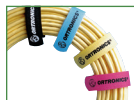
## MIGHTY MO AIR CAP AND AIR PANEL ROOF

Mighty Mo Air Cap and Air Panel Roof systems attach to the top of racks and cabinets to create a barrier that prevents hot and cold air from mixing. The Air Cap is a retractable roof system; the Air Panel Roof has heat sensitive panels that drop away during a fire event.

PART NUMBER	DESCRIPTION
MMACAP60X30	Air cap, 60"W x 30"L, black
MMACAP84X30	Air cap, 84"W x 30"L, black
MMAPR56X80	Air panel roof, 2"H x 55-1/2"W x 79-1/2"L, clear
MMAPR56X80-B	Air panel roof, 2"H x 55-1/2"W x 79-1/2"L, black

Custom sizes available.

## GENERAL ACCESSORIES



PART NUMBER	DESCRIPTION
7070080-xx	6" cable management straps
7070079-xx	12" cable management straps
60300005	110 punch down tool
60300006	110 replacement Blade
60300032	Cu cable stripping tool
403xx100	Voice icon
403xx200	Data icon
403xx500	Blank icon

Cable managment straps are available in the following colours: -00=black, -22=red, -23= orange, -24=yellow, -25= green, -26=blue. Place tailcode at end of part number.

Icons are available in the following colours. Replace xx with 00=black, 09=fog white, 13=Electrical ivory, 22=red, 23=orange, 24=yellow, 25=green, 26=blue, 27=purple.

**Europe/Middle East/Africa**

Headquarters  
Great King Street North  
Birmingham, B19 2LF  
United Kingdom  
Phone: +44.01215.150.669  
Fax: +44.01215.150.667

**Latin America Headquarters**

Montes Urales NO. 715 3er Piso  
Col. Lomas de Chapultepec  
MEXICO D.F. - C.P. 11000  
Phone: +52.55.5201.6450

**Asia Pacific Headquarters**

125 Eugene O'Neill Drive  
New London, CT 06320  
Phone: 860.445.3900  
Fax: 860.405.2992



**ORTRONICS®**

**Ortronics**

**Global Headquarters**

125 Eugene O'Neill Drive  
New London, CT 06320  
Phone: 800.934.5432  
or 860.445.3900  
Fax: 860.405.2992  
[www.ortronics.com](http://www.ortronics.com)