

2018/19

Structural Cabling Network Solution



End-to-end network cabling solution

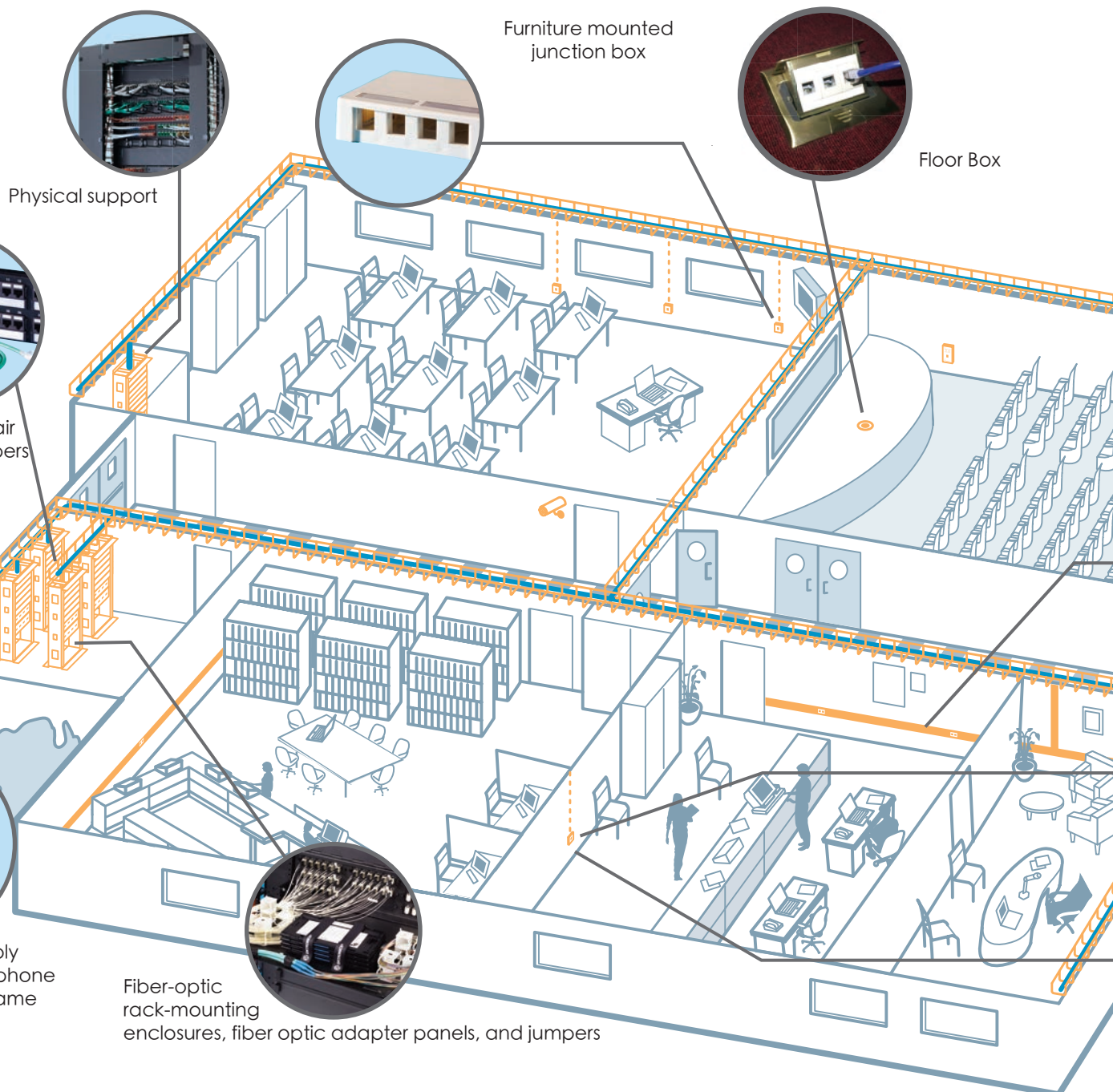
NCSAORTRONICS



Modular Structured cabling solutions by NCSA Ortronics bring reliability, efficient of installation and high performance to our valuable customers. We offer high quality, budgetary price solutions for network communication engineering and Expertises.

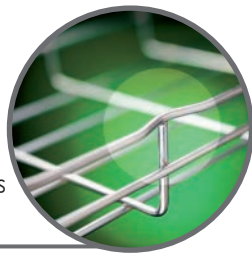
All NCSA/Ortronics products are tested by third parties to meet TIA/EIA-568-B.2 and ISO11801-2002 Category 5 and Category 6 cable specifications.

NCSA Ortronics



End-to-end solution

Network Cable Tray Solutions



The cabling system is integrated with standard patch panels and used with our fiber optic products. NCSA Ortronics provides a reliable end-to-end solution that perfectly solves all kinds of requirements in the cabling of the system.

Warranty

All qualified installations are covered by a 25-year application warranty and 5 years product warranty. NCSA Ortronics products offer value for our customers, with hassle free applications.

Metal and non-metal wire trough

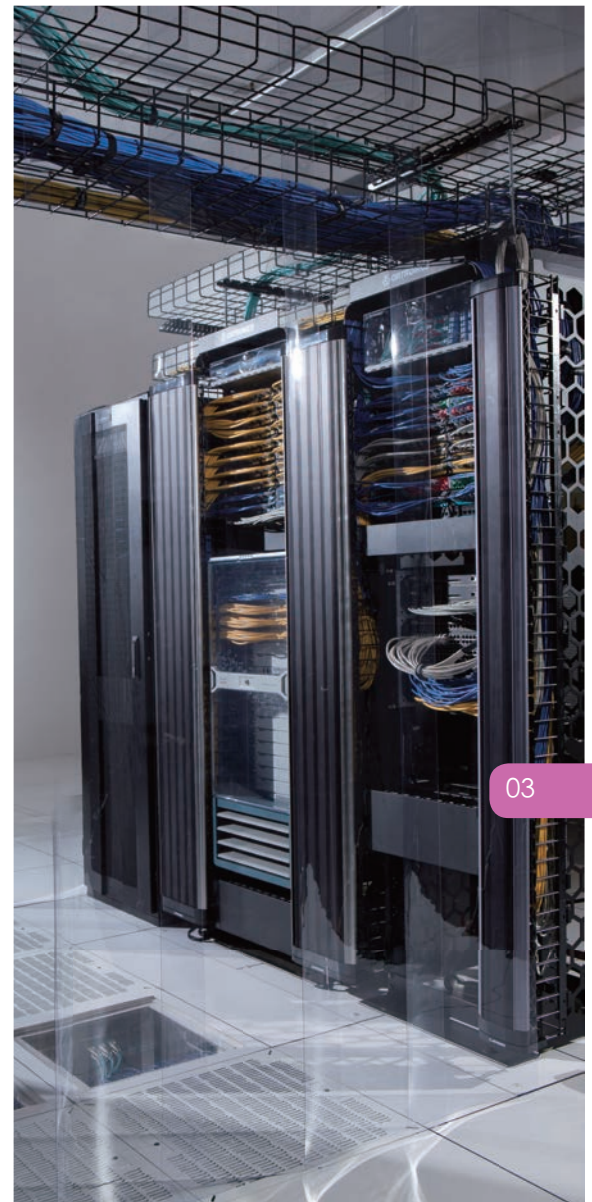


Keystone data, voice & multimedia Jacks



Keystone Faceplate

* Qualified installation is referring to the installation is done by NCSA or Ortronics certified installer using an approved production of connectivity and cable.



Workstation

NCSA Series I[®] Faceplate

It can be connected to all NCSA & TechChoice Copper & Fibre Jacks. Each Faceplate carries one, two or four Keystonemodules ports. It has sliding dust cover that protects the jack from contamination and damage. Plastic labels with Computer and Phone Symbol that could facilitate identification for each port, making it easier to be manged.



NC-FPS1K1



NC-FPS1K2

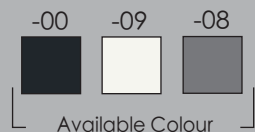


NC-FPS1K4



NC-FPS1LC-XX
NC-FPS1LP-XX

Faceplate Colour Code



Black = 00 ; White = 09 ; Grey = 08

Part No.	Descriptions
NC-FPS1K1	NCSA Ortronics Series I Faceplate, 180, Single Port
NC-FPS1K2	NCSA Ortronics Series I Faceplate, 180, Dual Ports
NC-FPS1K4	NCSA Ortronics Series I Faceplate, 180, Four Ports
NC-FPS1AK1	NCSA Ortronics Series I Faceplate, 45, Single Port
NC-FPS1AK2	NCSA Ortronics Series I Faceplate, 45, Dual Ports
NC-FPS1K1F	NCSA Ortronics Series I Fibre Jack Faceplate, 180, Single Port
NC-FPS1K2F	NCSA Ortronics Series I Fibre Jack Faceplate, 180, Dual Port
NC-FPS1LC-XX	NCSA Ortronics Series I Plastic Label, Computer, 100 pcs/bag
NC-FPS1LP-XX	NCSA Ortronics Series I Plastic Label, Phone, 100 pcs/bag

(Only for Keystone Standard Jack)

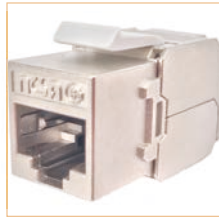
Plastic Label Colour Code



Colour available for the Plastic Label for Series I Faceplate

Black = 00 ; Red = 02 ; Orange = 03 ; Yellow = 04 ; Green = 05 ;
Blue = 06 ; Purple = 07 ; Grey = 08 ; Standard Colour is White,
no code required

Remark : Plastic labels have Phones and Computer Symbol



NC-KS610S



NC-KS610A



NC-KS6S



NC-KS6A



NC-KS5ES



NC-KS5EA



Keystone Copper Jack

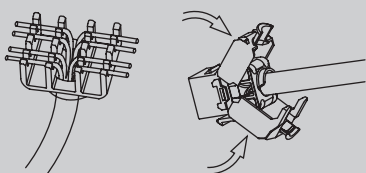
NCSA Ortronics Keystone Jacks is affixed with an easy-to-understand wire termination design (568A or 568B) and supports toolless installation or standard punch tool termination. Jack termination could be done first, then install the jack into faceplate or panel from the rear, it could improve the flexibility of installation.

Part No.	Descriptions
NC-KS610S	Keystone Shielded Copper Jack,Cat 6A,Tool-free,Metal
NC-KS610	Keystone Un-Shielded Copper Jack,Cat 6A,Tool-free
NC-KS6S	Keystone Shielded Copper Jack,Cat 6,Tool-free,Metal
NC-KS6A	Keystone Un-Shielded Copper Jack,Cat 6,Tool-free
NC-KS5ES	Keystone Shielded Copper Jack,Cat 5e,Tool-free,Metal
NC-KS5EA	Keystone Un-Shielded Copper Jack,Cat 5e,Tool-free

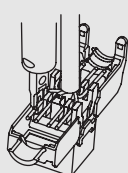
(Install with NCSA Keystone Faceplate and Panel only)

05

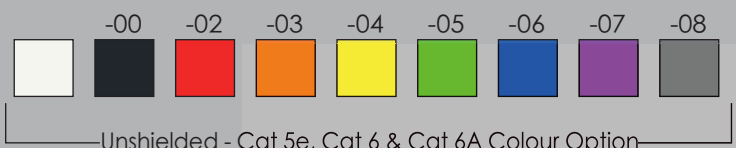
Tool-Free



110 Punch Tool



Colour Code



Unshielded - Cat 5e, Cat 6 & Cat 6A Colour Option

Black = 00 ; Red = 02 ; Orange = 03 ; Yellow = 04 ;
Green = 05 ; Blue = 06 ; Purple = 07 ; Grey = 08 ;
Standard Colour is White, no code required

Remark : Shielded Jack is Metal without colour choice

Panel & Manager



NC-PHFNKSU24



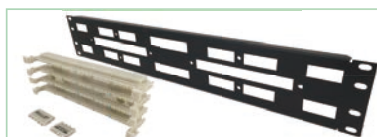
NC-PHANKSU24



NC-808000011



NC-60400131



NC-30600167
OR-110DBC6100
OR-110DBC5E100



NCSA Ortronics Panel (Empty)

Panel adopts the traditional multi-port design, which can be installed with 24 Keystone Jacks, for Category 6A, 6, 5e together with support both shielded and unshielded solutions, and even multimedia modular jacks can be installed. With a rear cable management frame, the cable has sufficient support to eliminate the impact of the falling stress on the cable. Available in both flat and angled.

Part No.	Descriptions
NC-PHFNKSU24	24 Ports Flat Panel, w/o Jack,Shielded/ Un-Shielded
NC-PHANKSU24	24 Ports Flat Panel, w/o Jack,Shielded/ Un-Shielded

(Could install NCSA Keystone Jacks, Not included in this part no.

NCSA Ortronics Cable Manager

made of high-grade aluminum alloy and steel, which can effectively manage the wire and prevent excessive bending of the wire to affect the transmission performance.

Part No.	Descriptions
NC-808000011	Aluminum Horizontal Cable Manager, 1.5" H x 1.5" D, 1U, Black
NC-808000011-W	Aluminum Horizontal Cable Manager, 1.5" H x 1.5" D, 1U, White
NC-60400131	Steel Cable Manager, Ring Type, 1.7" H x 3.5" D, Black
NC-60400131-W	Steel Cable Manager, Ring Type, 1.7" H x 3.5" D, White

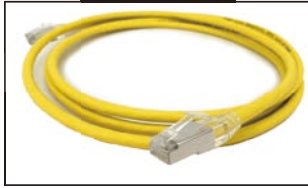
NCSA Ortronics 110 Panel

110 Block Cat 5e & Cat 6 patch panels for voice system wiring needs and partitioned wiring closet

Part No.	Descriptions
NC-30600167	110 voice / data module bracket, support 200 pairs, 2U, black
OR-110DBC6100	Clarity Cat 6, 110, 100 pairs, no foot
OR-110DBC5E100	Clarity Cat 5e, 110, 100 pairs, no foot
NC-110DBC5E100	NCSA Series Cat 5e, 110, 100 pairs, w/back panel, Black

Modular Patch Cord

NCSA Ortronics Modular Patch Cord enable a compact design for high-density applications with factory pre-terminated protection. Each cable is pre-tested to ensure best performance.



NC-MCSZ6A01-04



NC-MCS602-06



NC-MC602-06



NC-MCSZ5EA01-02

Colour Code

-09	-00	-02	-03	-04	-05	-06	-07	-08

Patch Cord Colour

Black = 00 ; Red = 02 ; Orange = 03 ; Yellow = 04 ;
Green = 05 ; Blue = 06 ; Purple = 07 ; Grey = 08 ;
White = 09 °

Remark : Standard Colour is Blue

Cat 6A Patch Cord

Part No.	Descriptions
NC-MCSZ6A	Shielded Modular Patch Cord,S/FTP,Cat 6A,LSZH
NC-MCS6A	Shielded Modular Patch Cord,S/FTP,Cat 6A,PVC
NC-MCZ6A	Un-Shielded Modular Patch Cord,U/UTP,Cat 6A, LSZH
NC-MC6A	Un-Shielded Modular Patch Cord,U/UTP,Cat 6A,PVC

Model No. = Part No. + Length (Meter) XX + (- Colour Code)

Cat 6 Patch Cord

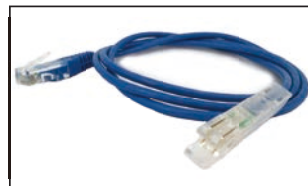
Part No.	Descriptions
NC-MCSZ6	Shielded Modular Patch Cord,F/UTP,Cat 6,LSZH
NC-MCS6	Shielded Modular Patch Cord,F/UTP,Cat 6,PVC
NC-MCZ6	Un-Shielded Modular Patch Cord,U/UTP,Cat 6, LSZH
NC-MC6	Un-Shielded Modular Patch Cord,U/UTP,Cat 6,PVC

Model No. = Part No. + Length (Meter) XX + (- Colour Code)

Cat 5e Patch Cord

Part No.	Descriptions
NC-MCSZ5E	Shielded Modular Patch Cord,F/UTP,Cat 5e,LSZH
NC-MCS5E	Shielded Modular Patch Cord,F/UTP,Cat 5e,PVC
NC-MCZ5E	Un-Shielded Modular Patch Cord,U/UTP,Cat 5e, LSZH
NC-MC5E	Un-Shielded Modular Patch Cord,U/UTP,Cat 5e,PVC

Model No. = Part No. + Length (Meter) XX + (- Colour Code)



NC-VP1104501-06



NC-VP11011001-06

110 Patch Cord

Part No.	Descriptions
NC-VP11045XX-06	NCSA Ortronics Voice Patch Cord 110-RJ45
NC-VP110110XX-06	NCSA Ortronics Voice Patch Cord 110-110

Model No. = Part No. + Length (Meter) (XX = 01,02,03)

Fiber Optic Solution

NCSA Ortronics fiber optic solution supports all kind of fiber routing method. Our extensive range of products with enhances design for flexibility, quality & simple installation offering effective deployment.



NC-61500570-00

Fibre Enclosure

NC-61500570-00

- NCSA Series 1U Fibre Enclosure
- For Install 4 NCSA or Ortronics Series HDFP Adaptor Panel
- Open Top Cover, Front and Rear Doors with Sliding Tray
- Maximum Fibres Count (96 LC / 48 SC)

NC-62500570-00

- NCSA Series 2U Fibre Enclosure
- For Install 8 NCSA or Ortronics Series HDFP Adaptor Panel
- Open Top Cover, Front and Rear Doors with Sliding Tray
- Maximum Fibres Count (192 LC / 96 SC)

NC-64500570-00

- NCSA Series 4U Fibre Enclosure
- For Install 16 NCSA or Ortronics Series HDFP Adaptor Panel
- Open Top Cover, Front and Rear Doors with Sliding Tray with 2 Position Locks
- Maximum Fibres Count (384 LC / 192 SC)



NC-61500571-00

Basic Fibre Enclosure

NC-61500571-00

- NCSA Series Basic 1U Fibre Enclosure
- For Install 4 NCSA or Ortronics Series HDFP Adaptor Panel
- Front Sliding Tray
- Maximum Fibres Count (96 LC / 48 SC)

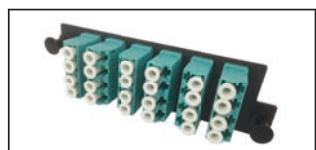
08



NC-HDFP-BLANK

NCSA Fibre Adaptor Panel

All fiber optic adapters are made of high-density ceramic & high-quality PC and ABS materials. After multiple ultra-fine grinding, the insertion loss is guaranteed to meet the highest requirements. It can be inserted and removed more than 500 times, and the products can meet international TIA standards.



NC-HDFP-LCQ24LC

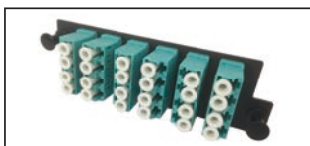
NCSA HDFP

NC-HDFP-BLANK	HDFP Blank Panel, Black
NC-HDFP-LCD12AC NC-HDFP-LCD12LC	HDFP Adaptor Panel SM/MM, 6 X dual LC (12 LC), Ceramic (AC=Blue;LC=Aqua)
NC-HDFP-LCQ24AC NC-HDFP-LCQ24LC	HDFP Adaptor Panel SM/MM, 6 X Quad LC (24 LC), Ceramic (AC=Blue;LC=Aqua)
NC-HDFP-MPA72CA NC-HDFP-MPA72LA NC-HDFP-MPA72MA	HDFP Adaptor Panel SM/MM, 6 X MPO, Type A, (CA=Green ;LA=Aqua ;MA=Beige)
NC-HDFP-MPA96CA NC-HDFP-MPA96LA NC-HDFP-MPA96MA	HDFP Adaptor Panel SM/MM, 8 X MPO, Type A, (CA=Green ;LA=Aqua ;MA=Beige)
NC-HDFP-MTD12AA NC-HDFP-MTD12LA NC-HDFP-MTD12MA	HDFP Adaptor Panel SM/MM, 6 X Dual MT-RJ (12 cores) (AA=Blue;LA=Aqua;MA=Beige)

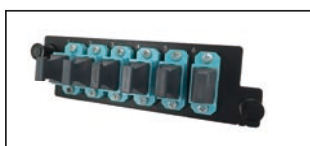
For more information, please call your local NCSA Ortronics sales representative.



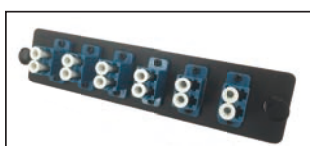
NC-HDFP-BLANK



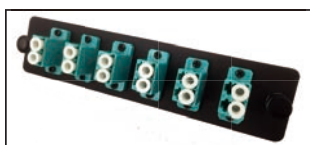
NC-HDFP-LCQ24LC



NC-HDFP-SCS06LC



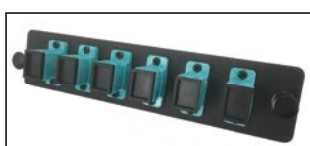
NC-OFP-LCD12AC



NC-OFP-LCD12LC



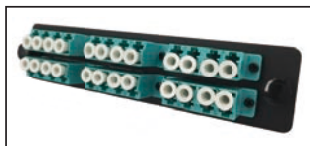
NC-OFP-SCD06AC



NC-OFP-SCD06LC



NC-OFP-SCD12LC



NC-OFP-LCQ24LC

NCSA HDFP High Density Fiber Optic Adapter

NC-HDFP-SCD06AC NC-HDFP-SCD06CC NC-HDFP-SCD06LC	NCSA Series HDFP Adapter Panel, SM / MM, 3 X SC Duplex Connectors (6 Cores), ceramic (AA = Blue ; CC = Green ; LC = Aqua)
NC-HDFP-SCD08AC NC-HDFP-SCD08LC	NCSA Series HDFP Adapter Panel, SM / MM, 4 X SC Duplex Connectors (8 Cores), Ceramic (AC = Blue ; LC = Aqua)
NC-HDFP-SCD12AC NC-HDFP-SCD12CC NC-HDFP-SCD12LC	NCSA Series HDFP Adapter Panel, SM / MM, 6 X SC Duplex Connectors (12 Cores), Ceramic (AA = Blue ; CC = Green ; LC = Aqua)
NC-HDFP-SCS06AC NC-HDFP-SCS06LC	NCSA Series HDFP Adapter Panel, SM / MM, 6 X SC Simplex Connectors (6 Cores), Ceramic (AC = Blue ; LC = Aqua)
NC-HDFP-STD08AC NC-HDFP-STD08LC	NCSA Series HDFP Adapter Panel, SM / MM, 4 X ST Duplex Connectors (8 Cores), Ceramic (AC = Blue ; LC = Aqua)
NC-HDFP-STD08AC NC-HDFP-STD08LC	NCSA Series HDFP Adapter Panel, SM / MM, 6 X ST Duplex Connectors (12 Cores), Ceramic (AC = Blue ; LC = Aqua)
NC-HDFP-STD08LC	NCSA Series HDFP Adapter Panel, SM / MM, 6 X ST Simplex Connectors (6 Cores), Ceramic

NCSA OFP Fiber Optic Adapter

NC-OFP-BLANK	NCSA Series OFP Blank Adapter Panel, Black
NC-OFP-LCD12AC NC-OFP-LCD12LC	NCSA Series OFP Adapter Panel, SM / MM, 6 X Duplex LC Connectors (12 Cores), Ceramic (AC = Blue ; LC = Aqua)
NC-OFP-LCQ24AC NC-OFP-LCQ24LC	NCSA Series OFP Adapter Panel, SM / MM, 6 X Quad LC (24 Cores), Ceramic (AC = Blue ; LC = Aqua)
NC-OFP-MPA72CA NC-OFP-MPA72LA NC-OFP-MPA72MA	NCSA Series OFP Adapter Panel, SM / MM, 6 X MPO Connectors, Type A (CA = Green ; LA = Aqua ; MA = Beige)
NC-OFP-MPA96CA NC-OFP-MPA96IA	NCSA Series OFP Adapter Panel, SM / MM, 8 X MPO Connectors, Type A (CA = Green ; IA = Beige)
NC-OFP-MPA96LA NC-OFP-MPA96MA	NCSA Series OFP Adapter Panel, SM / MM, 8 X MPO Connectors, Type A (LA = Aqua ; MA = Beige)
NC-OFP-MTD12AA NC-OFP-MTD12LA NC-OFP-MTD12MA	NCSA Series OFP Adapter Panel, SM / MM, 6 X Duplex MT-RJ Connectors (12 Cores) (AA = Blue ; LA = Aqua ; MA = Beige)
NC-OFP-SCD06AC NC-OFP-SCD06CC NC-OFP-SCD06LC	NCSA Series OFP Adapter Panel, SM / MM, 3 X SC Duplex Connectors (6 Cores), Ceramic (AC = Blue ; CC = Green ; LC = Aqua)
NC-OFP-SCD08AC NC-OFP-SCD08LC	NCSA Series OFP Adapter Panel, SM / MM, 4 X SC Duplex Connectors (8 Cores), Ceramic (AC = Blue ; LC = Aqua)
NC-OFP-SCD12AC NC-OFP-SCD12CC NC-OFP-SCD12LC	NCSA Series OFP Adapter Panel, SM / MM, 6 X SC Duplex Connectors (12 Cores), Ceramic (AC = Blue ; CC = Green ; LC = Aqua)
NC-OFP-SCS06AC NC-OFP-SCS06LC	NCSA Series OFP Adapter Panel, SM / MM, 6 X SC Simplex Connectors (6 Cores), Ceramic (AC = Blue ; LC = Aqua)
NC-OFP-STD08AC NC-OFP-STD08LC	NCSA Series OFP Adapter Panel, SM / MM, 4 X ST Duplex Connectors (8 Cores), Ceramic (AC = Blue ; LC = Aqua)
NC-OFP-STD12AC NC-OFP-STD12LC	NCSA Series OFP Adapter Panel, SM / MM, 6 X ST Duplex Connectors (12 Cores), Ceramic (AC = Blue ; LC = Aqua)
NC-OFP-STS06NC	NCSA Series OFP Adapter Panel, SM / MM, 6 X ST Simplex Connectors (6 Cores), Ceramic

Fiber Optic Solution

Fibre Jack

NCSA Ortronics Fiber Keystone Jack is manufactured using state-of-the-art ceramic sleeves and high-quality impact-resistant thermoplastics that can withstand up to 500 insertions without affecting insertion loss performance.



NC-KSLCS



NC-KSLCM



NC-KSSCS



NC-KSSCM



NC-FC



NC-KSST

NC-KSLCS	Fiber Jack, SM, LC, Duplex, Ceramic, Blue/White
NC-KSLCM	Fiber Jack, MM, LC, Duplex, Ceramic, Aqua/White
NC-KSSCS	Fiber Jack, SM, SC, Duplex, Ceramic, Blue/White
NC-KSSCM	Fiber Jack, MM, SC, Duplex, Ceramic, Aqua/White
NC-KSFC	Fiber Jack, MM / SM, FC, Simplex, Ceramic, Metal / Black
NC-KSST	Fiber Jack, MM / SM, ST, Simplex, Ceramic, Metal / Black

Remark : The standard color is white



Design network cabling system to meet high quality and fast installation requirements

All Jacks, panels and patch panels are designed for indoor and outdoor, office areas, open spaces, computer rooms and data centers. NCSA Ortronics cabling system help engineers with fast installation and stable network performance.

Fibre Pigtail



NC-P1PC9FLRZZ00XM



NC-P1PF9FLGZZ00XM



NC-P1PC9FLRZZ00XM



NC-P1PF9FLGZZ00XM

NC-P1PC9FLRZZ00XM	NCSA Series Fibre Pigtail, SM, 900UM, SC, UPC, <0.3dB, 1 strip, X meters, yellow
NC-P1PC9FLSZZ00XM	NCSA Series Fibre Pigtail, SM, 900UM, LC, UPC, <0.3dB, 1 strip, X meters, yellow
NC-P1PF9FLFZZ00XM	NCSA Series Fibre Pigtail, MM, OM3, 900UM, SC, UPC, <0.5dB, 1 strip, X meters, Aqua
NC-P1PF9FLGZZ00XM	NCSA Series Fibre Pigtail, MM, OM3, 900UM, LC, UPC, <0.5dB, 1 strip, X meters, Aqua
NC-P1PG9FLFZZ00XM	NCSA Series Fibre Pigtail, MM, OM4, 900UM, SC, UPC, <0.5dB, 1 strip, X meters, Aqua
NC-P1PG9FLGZZ00XM	NCSA Series Fibre Pigtail, MM, OM4, 900UM, LC, UPC, <0.5dB, 1 strip, X meters, Aqua

Description : X stands for length: 1 = 1 m; 2 = 2 m

Fiber Splice Tray



NC-61500016

NC-61500016	NCSA Series Fiber Splice Tray, Optical Fusion, 12/24/48 Fibers For all Fibre Enclosures
-------------	---

LC Fiber Jumper



NC-P1DC2ILLZLZXXXM



NC-P1DF2ILLZLZXXXM

NC-P1DC2ILLZLZXXXM	NCSA Series Fiber Jumper, OS2, <0.3dB, SM, 9µm, Split Duplex Connectors, LC (UPC)-LC (UPC), yellow, LSZH, XXX meters
NC-P1DF2ILLZLZXXXM	NCSA Series Fiber Jumper, OM3, <0.5dB, MM, 50µm, Split Duplex Connectors, LC(UPC)-LC(UPC), Aqua, LSZH, XXX meters
NC-P1DG2ILLZLZXXXM	NCSA Series Fiber Jumper, OM4, <0.5dB, MM, 50µm, Split Duplex Connectors, LC(UPC)-LC(UPC), Aqua, LSZH, XXX meter

Description : XXX stands for length: 001 = 1 meter; 002 = 2 meters; ...

Pre-Term Fiber Solution

Pre-Term Fibre

NCSA Ortronics pre-terminated fiber, with multi-layers high-precision grinding, and rigorous performance testing, as well as 3D qualification inspection of all end faces, to achieve the highest level of performance, meet the Stringent requirement on attenuation, return loss, durability for data center.



NC-MMCA12L10M



NC-MMFA12L10M



NC-LLC12L10m



NC-LLF12L10m

NC-MMCA12LXM	MTP-MTP Optical Jumper, OS2 SM, 12 cores, Type A, LSZH, X meter
NC-MMFA12LXM	MTP-MTP Optical Jumper, OM3 MM, 12 cores, Type A, LSZH, X meter
NC-MMGA12LXM	MTP-MTP Optical Jumper, OM4 MM, 12 cores, Type A, LSZH, X meter
NC-MMCB12LXM	MTP-MTP Optical Jumper, OS2 SM, 12 cores, Type B, LSZH, X meter
NC-MMFB12LXM	MTP-MTP Optical Jumper, OM3 MM, 12 cores, Type B, LSZH, X meter
NC-MMGB12LXM	MTP-MTP Optical Jumper, OM4 MM, 12 cores, Type B, LSZH, X meter
NC-MMCC12LXM	MTP-MTP Optical Jumper, OS2 SM, 12 cores, Type C, LSZH, X meter
NC-MMFC12LXM	MTP-MTP Optical Jumper, OM3 MM, 12 cores, Type C, LSZH, X meter
NC-MMGC12LXM	MTP-MTP Optical Jumper, OM4 MM, 12 cores, Type C, LSZH, X meter
NC-MLC12LXM	MTP/APC-LC/UPC Pre-Terminated Cable, OS2 SM, 12 cores, LSZH, yellow, X meters
NC-MLF12LXM	MTP/APC-LC/UPC Pre-Terminated Cable, OM3 MM, 12 cores, LSZH, Aqua, X meters
NC-MLG12LXM	MTP/APC-LC/UPC Pre-Terminated Cable, OM4 MM, 12 cores, LSZH, Aqua, X meters
NC-MLC24LXM	MTP/APC-LC/UPC Pre-Terminated Cable, OS2 SM, 24 cores, LSZH, yellow, X meters
NC-MLF24LXM	MTP/APC-LC/UPC Pre-Terminated Cable, OM3 MM, 24 cores, LSZH, Aqua, X meters
NC-MLG24LXM	MTP/APC-LC/UPC Pre-Terminated Cable, OM4 MM, 24 cores, LSZH, Aqua, X meters
NC-LLC12LXM	LC/UPC-LC/UPC Pre-Terminated Cable, OS2 SM, 12 core, LSZH, yellow, X m
NC-LLF12LXM	LC/UPC-LC/UPC Pre-Terminated Cable, OM3 MM, 12 core, LSZH, Aqua, X m
NC-LLG12LXM	LC/UPC-LC/UPC Pre-Terminated Cable, OM4 MM, 12 core, LSZH, Aqua, X m

For more pre-terminated fiber types, please contact our sales representatives

Networking Accessories

Copper Connectors



NC-CC5U50CL



NC-CC6F50CL



NC-CC6U50CL

NC-CC5U50CL	NCSA Series Unshielded RJ45 Connector, CAT5E, 2 Forks, Single/Multiple Strand, Transparent PC, 50u" Full Gold Plated, UL94-V2, 100/Box
NC-CC5UAGCL	NCSA Series Unshielded RJ45 Connector, CAT5E, 2 Forks, Single/Multiple Strand, Transparent PC, 50u" A-Side Gold Plated, UL94-V2, 100/Box
NC-CC6U50CL	NCSA Series Unshielded RJ45 Connector, CAT6, 3 Forks, Single/Multiple Strand, Transparent PC, 50u" Full Gold Plated, UL94-V2, 100/Box
NC-CC6UAGCL	NCSA Series Unshielded RJ45 Connector, CAT6, 3 Forks, Single/Multiple Strand, Transparent PC, 50u" A-Side Gold Plated, UL94-V2, 100/Box
NC-CC6F50CL	NCSA Series Shielded RJ45 Connector, CAT6, 3 Forks, Single/Multiple Strand, Transparent PC, 50u" Full Gold Plated, UL94-V2, 100/Box
NC-CC6FAGCL	NCSA Series Shielded RJ45 Connector, CAT6, 3 Forks, Single/Multiple Strand, Transparent PC, 50u" A-Side Gold Plated, UL94-V2, 100/Box

Floor Faceplate



NC-FCF8686M

NC-FCF1212M	NCSA Series, Floor Faceplate, pop-up damping, including metal Floor box 100X100X53, ground insert surface 120X120, 3 ports, copper, gold
-------------	--

The 3 Jacks in the picture are not included in this model and must be purchased separately.

Coaxial FacePlate

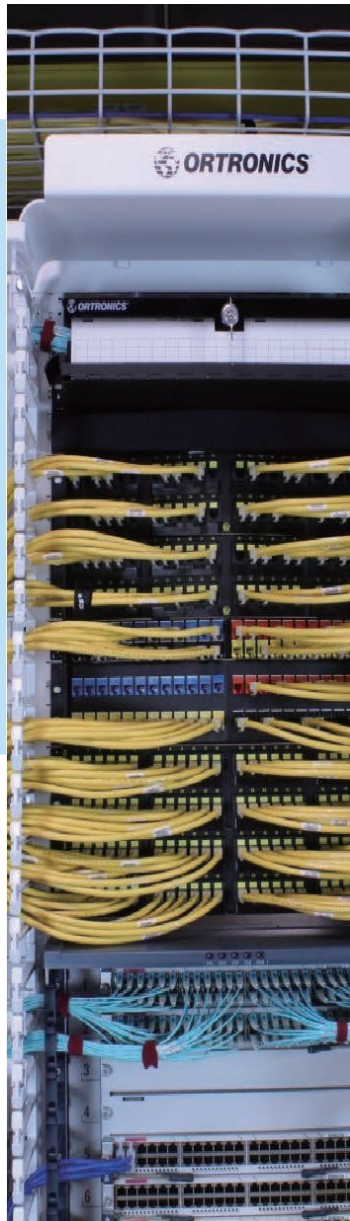


NC-FPC75

NC-FPC75	NCSA Series Coaxial Faceplate with Jack, 1 Port, White
----------	--

Physical Support

Complete Cable Management System protects and extends the life of your network. NCSA ORTRONICS cable management products are available in a wide range of products to meet different routing needs, while being rugged and strong with flexibility to meet existing system design and future system expansion requirements.



Mighty Mo 20 Rack System

OR-MM20716-W	Rack Size : Loading : Material :	45U ; Channel Depth 16' 900 KG Aluminum Alloy
OR-MM20730-W	Rack Size : Loading : Material :	45U ; Channel Depth 30' 900 KG Aluminum Alloy
OR-MM20742-W	Rack Size : Loading : Material :	45U ; Channel Depth 42' 900 KG Aluminum Alloy
OR-MM20816-W	Rack Size : Loading : Material :	51U ; Channel Depth 16' 900 KG Aluminum Alloy
OR-MM20830-W	Rack Size : Loading : Material :	51U ; Channel Depth 30' 900 KG Aluminum Alloy

NCSA Series Network Cabinet

NC-NC6642GS	Cab Size : Loading : Material :	42U ; Depth : 600cm 800 KG Steel
NC-NC6845GS	Cab Size : Loading : Material :	45U ; Depth : 800cm 800 KG Steel
NC-NC61047GS	Cab Size : Loading : Material :	47U ; Depth : 1000cm 800 KG Steel

NCSA Network Cabinet NC Series, 600 X 600; 600 X 800; 600 X 1000; 600 X 1100; 600 X 1200; glass door, single or double door
For any special dimension and configuration, please contact our sales representatives



NCSA Series Server Cabinet

NC-SC8842GS	Cab Size : Loading : Material :	42U ; Depth : 800cm 1000 KG Steel
NC-SC81045GS	Cab Size : Loading : Material :	45U ; Depth : 1000cm 1000 KG Steel
NC-SC81247GS	Cab Size : Loading : Material :	47U ; Depth : 1200cm 1000 KG Steel

NCSA Server Cabinet SC Series, 800 X 800; 800 X 1000; 800 X 1100; 800 X 1200; glass door, single or double door
For any special dimension and configuration, please contact our sales representatives

Wall Mount Cabinet / Half Size Cabinet

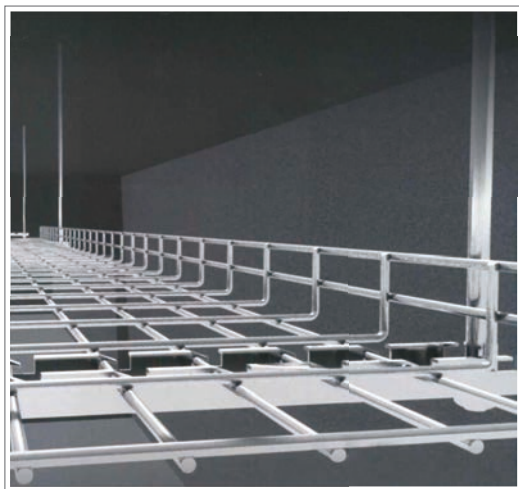


NC-NC645SS-B

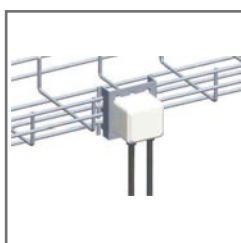
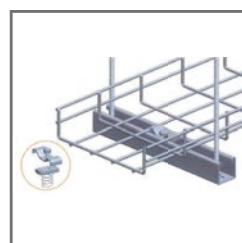
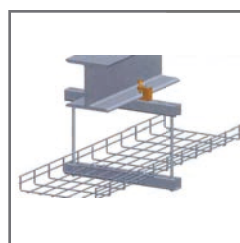
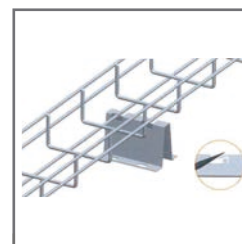
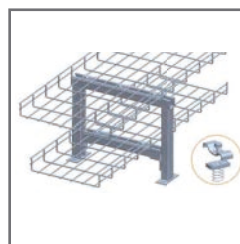
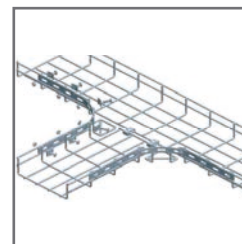
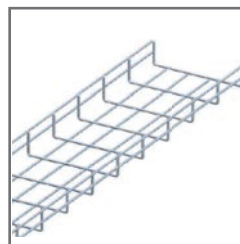
NC-WC60506WS	Rack Size : Material :	6U; Channel Depth : 600 X 500 cm Steel
NC-WC605012WS	Rack Size : Material :	12U; Channel Depth : 600 X 500 cm Steel
NC-WC605015WS	Rack Size : Material :	15U; Channel Depth : 600 X 500 cm Steel

For any special dimension and configuration, please contact our sales representatives

NCSA Ortronics Network Cable Tray



For details, please refer to the Cable Tray brochure or contact our Local Sales Presentatives



中国区域
中国北京市朝阳区高碑店乡
高碑店村民俗文化大街
1703号1F02室
Phone: +86.010.53580175

Asia Pacific
3rd Floor Hang Seng Building, No. 200
Hennessy Road, Wanchai, Hong Kong
Phone (HKG): +852.2633.8000

South East Asia
17 Neythal Road,
Singapore. 628582
Phone (SNG): +65.9628.1028

Europe/Middle East/Africa
Great King Street North
Birmingham, B19 2LF
United Kingdom
Phone: +44(0).796.730.9227

Latin America
Montes Urales NO. 715 3er Piso
Col. Lomas de Chapultepec
MEXICO D.F. - C.P. 11000
Phone: +52.55.5201.6450

Level 2, OVAL Building, Hi-tech City,
Madhapur, Hyderabad - 500081, India
Phone: +91.40.4433.4234

ORTRONICS

Global Headquarters
125 Eugene O' Neill Drive
New London, CT 06320
Phone: +1.800.934.5432
or +1.860.445.3900
Fax: +1.860.405.2992

www.ortronics.asia
www.legrand.us

Follow Us

