

NEW

COPPER CONNECTIVITY

# SNAP

## Pre-Terminated Copper Cabling System



Quick and reliable data center installations are a SNAP with the latest innovation from Ortronics/Legrand!

In today's workplace, where network downtime is costly and detrimental to any business or organization, bringing a new data center online must be completed as quickly as possible. Quick and easy installations that guarantee reliable performance are more critical than ever.

Clarity SNAP™ Pre-Terminated Copper Cabling System offers the above-the-standards performance of Clarity® connectivity in a custom terminated cable assembly system that's ready to plug and go. Its innovative modular design combines high performance and installer friendly features with the quick deployment and reliability of a factory terminated and tested cabling system.

Cable  
Assemblies



Patch Panels



Workstation  
Modules



FEATURED  
PRODUCTS

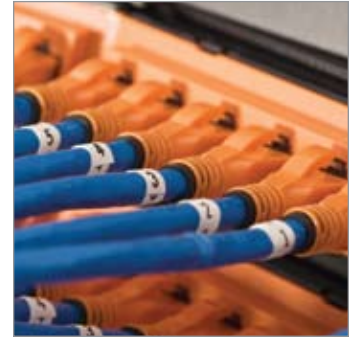
## SNAP Pre-Terminated Copper Cabling System

The new SNAP connection utilizes a bifurcated termination method, placing one mating half of the termination onto the horizontal cable and the other on the 8-position T568 jack interface. This approach reduces the size of the terminated cable ends, making it easier to pull and lace cables through racks, cabinets, cable management systems, and pathways. In addition, individual cable ends of bundled cables can be passed through one at a time, as compared to some alternative designs where the connections are bundled into modules and must be pulled through pathways and openings that way.

As a result, SNAP cable assemblies route faster, with less interference from connector ends within congested pathways. And, the robust cable ends are ruggedly designed to handle the physical challenges of any installation. When in position, these cable ends simply SNAP into the back of the panel or workstation outlet, completing the termination. It's a SNAP!

The Clarity SNAP system also offers the added assurance of the premium performance of Clarity connectivity. The SNAP bifurcated termination offers improved pair-to-pair isolation and improved pair balance through the connector, while barriers located on the sides of these terminations enhance alien noise performance. The result is improved channel immunity from internal and external noise, which ensures consistently high performance links and channels.

The benefit of these technological advancements is a consistently high performance cabling system that is fast and simple to install and enables quick network deployment, increased reliability, and lower total cost of ownership. Both the electrical design of SNAP and the additional controls and in-process testing only available in a factory environment lead to improved consistency in channel performance, to improve the overall average results that you can expect from your installation.



## SNAP Workstation Modules

**NEW**

### SNAP TracJack Workstation Modules



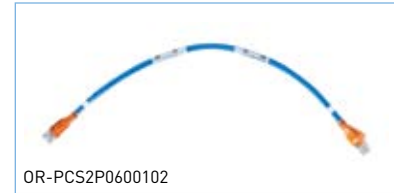
PART NO.	DESCRIPTION
OR-TJSN6A-xx	Clarity 10G
OR-TJSN6-xx	Clarity 6
OR-TJSN5E-xx	Clarity 5E

NOTE: xx = 2 digit color code

NOTE: SNAP TJs available colors -09 fog white, -36 blue, -42 red, -43 orange, -44 yellow, -45 green, -68 gray

## SNAP Cable Assemblies

Each Clarity SNAP cable assembly includes an identification label, which includes part number, performance level, and serialized quality assurance number for future traceability.



**NEW**

### Multiple Cable Harnesses Matrix

Choose your cable type, number of cables, color, length and leg style using the blue shaded code.  
Note: More colors are coming soon.

	CABLE TYPE		# OF CABLES		COLOR		LENGTH FEET, (INCLUDES LEGS)	END 1 LEGS		END 2 LEGS	
PCH	10G Plenum	XP	6 spiral-bound bundle	6B	Blue	06	XXX	no stagger w/ protective sock	1	no stagger w/ protective sock	1
	LM2000 Plenum	3P									
	LM2000 Riser	3R			White	09		stagger left w/ protective sock	2	stagger left w/ protective sock	2
	LM1000 Plenum	2P	6 in mesh					stagger right w/ protective sock	3	stagger right w/ protective sock	3
	LM1000 Riser	2R						no stagger w/ pulling sock	4	no stagger w/ pulling sock	4
	LM350 Plenum	1P						stagger left w/ pulling sock	5	stagger left w/ pulling sock	5
	LM350 Riser	1R						stagger right w/ pulling sock	6	stagger right w/ pulling sock	6

Example: PCH XP 6B 06 XXX 1 1

**NEW**

### Single Cable Assembly Matrix

Choose your cable type, color, length and leg style using the blue shaded code.  
Note: More colors are coming soon.

	CABLE TYPE		COLOR		LENGTH FEET, (INCLUDES LEGS)	CABLE NUMBER LABEL	
PCS	10G Plenum	XP	Blue	06	XXX	No label	00
	LM2000 Plenum	3P				#1	01
	LM2000 Riser	3R				#2	02
	LM1000 Plenum	2P	White	09		#3	03
	LM1000 Riser	2R				#99	99
	LM350 Plenum	1P					
	LM350 Riser	1R					

Example: PCS XP 06 XXX 01

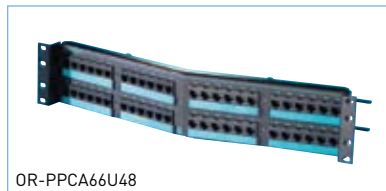
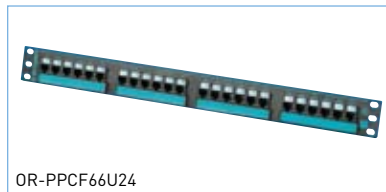
# SNAP Patch Panels

Clarity SNAP patch panels offer improved rear cable management with the addition of an adjustable depth rear management bar. The rear portion of these bars is also removable to provide more working room for the initial termination of panels. After cables are SNAP terminated, the rear bars are attached and adjusted to the depth that best matches the cable and rack selections.

SNAP panels are also supplied with SNAP-on positioning bend limiters. These plastic cable management aids assist with maintaining proper bend radius of all cables while minimizing the stress on any one cable. This is especially beneficial for cable bundles, as this allows the dissipation of any stress across the entire bundle instead of any one cable termination.

**NEW**

## SNAP Panels



### Flat Panels

PART NO. FLAT 24-PORT	PART NO. FLAT 48-PORT	DESCRIPTION
OR-PPCF610U24	OR-PPCF610U48	Clarity 10G flat panels with 6-port modules
OR-PPCF66U24	OR-PPCF66U48	Clarity 6 flat panels with 6-port modules
OR-PPCF5E6U24	OR-PPCF5E6U48	Clarity 5E flat panels with 6-port modules

### Angled Panels

PART NO. ANGLED 24-PORT	PART NO. ANGLED 48-PORT	DESCRIPTION
OR-PPCA610U24	OR-PPCA610U48	Clarity 10G angled panels with 6-port modules
OR-PPCA66U24	OR-PPCA66U48	Clarity 6 angled panels with 6-port modules
OR-PPCA5E6U24	OR-PPCA5E6U48	Clarity 5E angled panels with 6-port modules

### Panel Jack Panels without Jacks

PART NO. FLAT PANEL	PART NO. ANGLED PANEL	DESCRIPTION
OR-PHDSJU24	OR-PHASJU24	24-port
OR-PHDSJU48	OR-PHASJU48	48-port

### Panel Jack

PART NO.	DESCRIPTION
OR-PJSN6A-xx	Clarity 10G
OR-PJSN6-xx	Clarity 6
OR-PJSN5E-xx	Clarity 5E

NOTE: SNAP PJs available colors -00 black, -36 blue, -42 red, -43 orange, -44 yellow, -45 green, -68 gray