



Mighty Mo[®] GX Cabinets

Designed to Perform,
Configured to Fit



Ortronics

Mighty Mo[®] GX

Configured By You, Made By Legrand | Ortronics





(adj.) ef-fi-cient

Performing or functioning in the best possible manner with the least waste of time and effort; having and using requisite knowledge, skill, and industry; competent; capable.

Ortronics® Mighty Mo® GX Cabinet system is an economical, configurable storage solution that allows you to build a cabinet to fit your server and networking equipment needs and airflow, cable and power requirements.



Mighty Mo GX is part of Layer Zero® Solutions

Features

The Mighty Mo GX Cabinet Series is made in the USA.

The Mighty Mo GX cabinet is fully modular and configurable to suit the needs of your specific installation. Each cabinet can be assembled with as few or as many accessories as needed to properly support your servers, switches and patch panels. The cabinets are designed to stand alone or easily gang together, as your network demands increase.

- Select models available for next day shipment
- Custom configured to meet equipment and space storage requirements
- Select accessories can be pre-installed, reducing installation time and packaging waste
- Configurations utilize a single part number and price to simplify ordering
- Available in 24U, 42U, 45U and 48U heights
- Available in 24" (match 24"W floor tiles), 29.5" and 31.5" widths
- Available in 36", 42" and 48" depths
- EIA mounting rails are available in 0.375" square hole or #12-24 tapped styles
- 3,000 lbs. static load capacity
- UL and cUL listed, UL 60950-1 2nd Edition, NWIN



FULLY CONFIGURABLE

Mighty Mo GX cabinets are available in 29 different frame sizes and two colors (black or white). Built to your configuration, a single part number represents your cabinet design for simplified ordering and receiving. It arrives fully assembled for immediate, on-site installation.



UNISTRUT FRAME DESIGN

The Unistrut design offers infinite mounting rail adjustments, enabling the installation of vertical accessories anywhere along the struts.



CABLE MANAGEMENT

Mighty Mo GX advanced cable management products provide improved management for both servers and high density switches. Available bend limiters provide standards compliant protection for fiber optic and 10G copper patch cords.



PASSIVE THERMAL MANAGEMENT

Mighty Mo GX baffles redirect the airflow of side vented equipment from the front to rear, ensuring the proper flow of air from cold aisle to hot aisle. Mighty Mo GX cabinets offer airflow baffles for single cabinet configurations, in between ganged cabinets and end of row cabinets.



ACCESS MANAGEMENT

Mighty Mo GX cabinet doors utilize 180° hinges to eliminate aisle blockage when loading or performing maintenance on equipment, without removing the door. All doors include locking handles to prevent unauthorized access and tampering. Side panels also come equipped with locks.



BONDING AND GROUNDING

Per the standard, every cabinet is bonded according to UL 60950-1 2nd Edition and offers a double-lug connection point at the front and rear of every frame.



Pre-Configured Cabinets

PART NO.	DESCRIPTION
OR-GXC422442-A1-B	Server, cabinet assembly 42U (80.45"H), 24"W, 42"D, black
OR-GXC422942-A1-B	Network, cabinet assembly 42U (80.45"H), 29.5"W, 42"D, black

Server Cabinet Includes:

- 42U frame with levelers and casters
- Two pairs of RU labeled equipment mounting rails with 0.375" square holes
- Mounting rail spacing at 30"
- Full width front mesh door
- Split mesh rear door
- Solid top panel with (2) 4" diameter gland grommets
- Double-wide PDU-mount lacing bar
- Side panels, both sides
- Rack unit cage nuts, #12-24 thread (package of 50)
- Panel screws, #12-24 (package of 50)
- Color is black

Network Cabinet Includes:

- 42U frame with levelers and casters
- Two pairs of RU labeled equipment mounting rails with #12-24 tapped holes
- Mounting rail spacing at 16.25"
- Full width front mesh door
- Split mesh rear door
- Solid top panel with (2) 4" diameter gland grommets
- Double-wide PDU-mount lacing bar
- Side panels, both sides
- Panel screws, #12-24 (package of 50)
- Color is black



NEXT DAY SHIPMENT

The Mighty Mo GX offers two pre-configured cabinets, designed for servers or networking equipment. They are stocked and available in limited quantities for **next day shipment**.

Cabinet System

Side Panels

- 2-piece side panels simplify handling and allow easy access for MAC work
- Individually locking side panels for greater security
- Flush panels maintain exact cabinet width
- 24U cabinet has single piece side panel

Mounting Rails

- EIA mounting rails are available with 0.375" square holes or #12-24 tapped holes
- Rack units are marked on each rail from top to bottom
- Rails positioned based on server (rail spacing at 30") or network (rail spacing at 16.25") cabinet design
- Fully adjustable along each frame

Full Width Doors

- Doors have 180° swing
- Field reversible
- Lockable swing door handle is included
- Available in mesh, Plexiglas® and solid
- Mesh is 63% open area



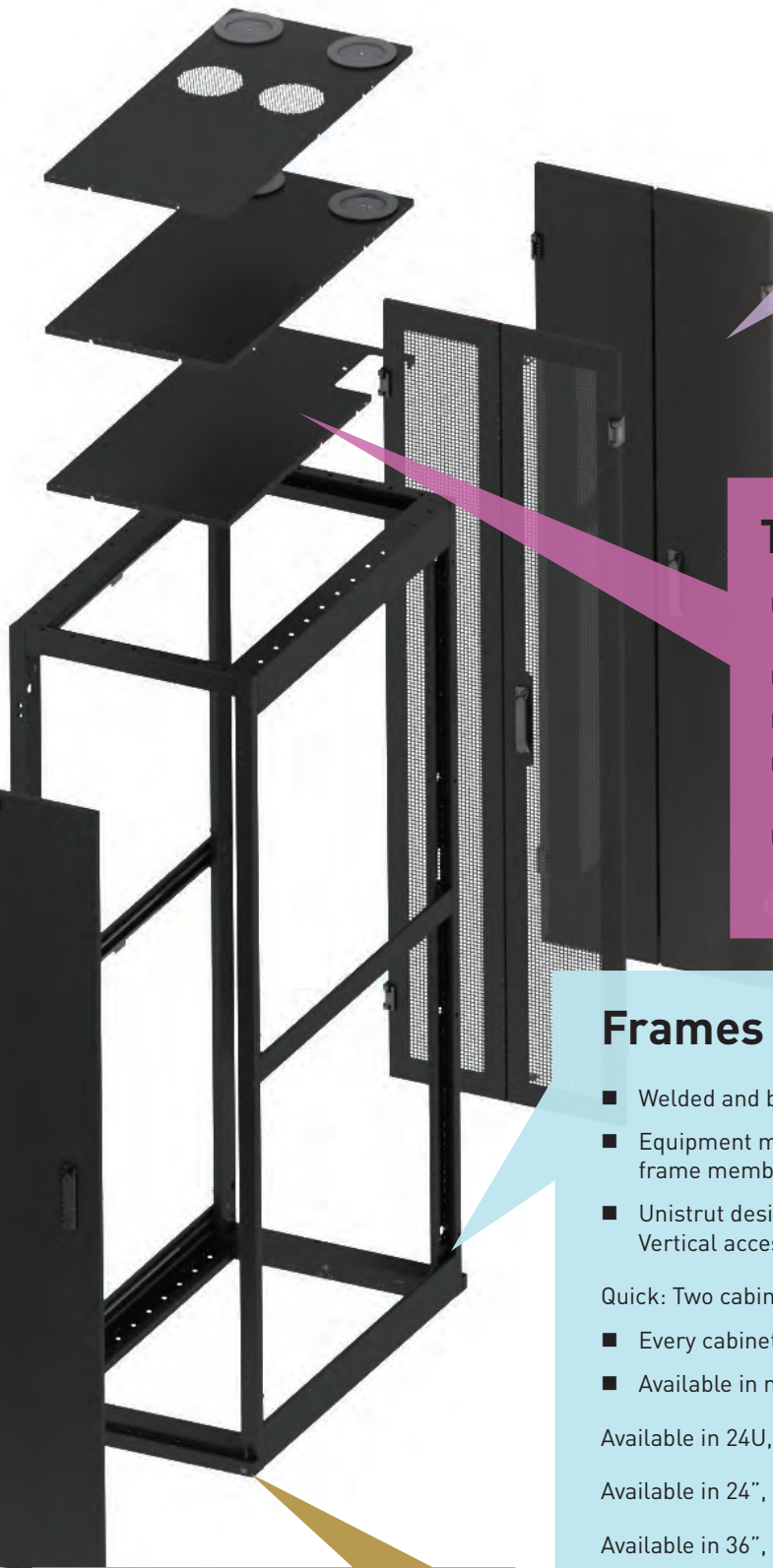
180° SWING



DOOR HANDLE



DOOR PIN



Split Doors

- Doors have 180° swing
- Lockable swing door handle is included
- Available in mesh and solid
- Mesh is 63% open area

Top Panels

- Top panels are single-piece construction and field reversible to provide cable access in the front or the rear
- Bolted to cabinet frame for added security
- Available in solid panel with two 4" cable gland grommets
- Available in vented with two 4" cable gland grommets. Optional fans are available.
- Available in cabling panel with two rectangular openings that allow removal after cables are installed. Optional top panel brush kit available.

Frames

- Welded and bolted steel four post frame
- Equipment mounting rails are supported by three front-to-back Unistrut frame members for added structural support
- Unistrut design allows for infinite mounting rail and accessory adjustment. Vertical accessories can be installed at any location along the strut.

Quick: Two cabinets can be ganged together with 8 bolts

- Every cabinet includes adjustable, self leveling feet and ganging hardware
- Available in network or server frame orientation

Available in 24U, 42U, 45U and 48U heights

Available in 24", 29.5" and 31.5" widths

Available in 36", 42" and 48" depths

Levelers & Casters

- All cabinets come fully equipped with levelers; cabinets can also be configured with casters

24" Wide GX Cabinets

Ideal for server applications, the 24"W Mighty Mo GX enclosure allows users to align with floor tiles, to stay "on grid" even when side panels are deployed. Speed of deployment was a primary consideration in design; the cabinets can be ganged by a single person without removing the doors. The cabinet provides maximum versatility with a static weight load capacity of 3,000 lbs., cable entry from the top or bottom and infinite rail adjustment. All cabinets are electrically bonded and UL and cUL listed, UL 60950-1 2nd Edition, NWIN.

These cabinets are configured-to-order, ensuring you get only what you need for your application. The structural components of the cabinet are available in black or white, while the accessories are available in black.

Configured-to-Order

Dimensions

- 24U - 24"W x 47.25"H x (36", 42")D
- 42U - 24"W x 78.75"H x (36", 42", 48")D
- 45U - 24"W x 84.00"H x (36", 42", 48")D
- 48U - 24"W x 89.25"H x (36", 42", 48")D

Weight Load Capacity

- 3,000 lbs. static
- 2,250 lbs. on casters

Agency Approvals

- UL60950-1
- RoHS compliant
- EIA compliant

Colors

- Black or white



FRAMES

24U	42U	45U	48U	DESCRIPTION
-	OR-GXC422448-B	OR-GXC452448-B	OR-GXC482448-B	48" deep frame with leveling feet
OR-GXC242442-B	OR-GXC422442-B	OR-GXC452442-B	OR-GXC482442-B	42" deep frame with leveling feet
OR-GXC242436-B	OR-GXC422436-B	OR-GXC452436-B	OR-GXC482436-B	36" deep frame with leveling feet

Note: Replace "-B" with "-W" for white

ENCLOSURE OPTIONS

	24U	42U	45U	48U	DESCRIPTION
EIA Mounting Rails	OR-GXC2424M38-B	OR-GXC4224M38-B	OR-GXC4524M38-B	OR-GXC4824M38-B	0.375" square hole, 14 ga., black, includes 2 rails
	OR-GXC2424M12-B	OR-GXC4224M12-B	OR-GXC4524M12-B	OR-GXC4824M12-B	#12-24 tapped, 12 ga., black, includes 2 rails
Doors, Full Width	OR-GXC2424DFM-B	OR-GXC4224DFM-B	OR-GXC4524DFM-B	OR-GXC4824DFM-B	Full width, mesh, 180° swing
	OR-GXC2424DFP-B	OR-GXC4224DFP-B	OR-GXC4524DFP-B	OR-GXC4824DFP-B	Full width, Plexiglas®, 180° swing
	OR-GXC2424DFS-B	OR-GXC4224DFS-B	OR-GXC4524DFS-B	OR-GXC4824DFS-B	Full width, solid, 180° swing
Doors, Split	OR-GXC2424DSM-B	OR-GXC4224DSM-B	OR-GXC4524DSM-B	OR-GXC4824DSM-B	Split, mesh, 180° swing
	OR-GXC2424DSS-B	OR-GXC4224DSS-B	OR-GXC4524DSS-B	OR-GXC4824DSS-B	Split, solid, 180° swing
Side Panels	-	OR-GXC4248SPSL-B	OR-GXC4548SPSL-B	OR-GXC4848SPSL-B	48" deep, solid, locking, covers 1 side of frame
	OR-GXC2442SPSL-B	OR-GXC4242SPSL-B	OR-GXC4542SPSL-B	OR-GXC4842SPSL-B	42" deep, solid, locking, covers 1 side of frame
	OR-GXC2436SPSL-B	OR-GXC4236SPSL-B	OR-GXC4536SPSL-B	OR-GXC4836SPSL-B	36" deep, solid, locking, covers 1 side of frame
Top Panels	-	OR-GXC2448TPS-B	OR-GXC2448TPS-B	OR-GXC2448TPS-B	48" deep, solid, includes (2) 4" dia. grommets
	OR-GXC2442TPS-B	OR-GXC2442TPS-B	OR-GXC2442TPS-B	OR-GXC2442TPS-B	42" deep, solid, includes (2) 4" dia. grommets
	OR-GXC2436TPS-B	OR-GXC2436TPS-B	OR-GXC2436TPS-B	OR-GXC2436TPS-B	36" deep, solid, includes (2) 4" dia. grommets
	-	OR-GXC2448TPV-B	OR-GXC2448TPV-B	OR-GXC2448TPV-B	48" deep, vented or fan, includes (2) 4" dia. grommets
	OR-GXC2442TPV-B	OR-GXC2442TPV-B	OR-GXC2442TPV-B	OR-GXC2442TPV-B	42" deep, vented or fan, includes (2) 4" dia. grommets
	OR-GXC2436TPV-B	OR-GXC2436TPV-B	OR-GXC2436TPV-B	OR-GXC2436TPV-B	36" deep, vented or fan, includes (2) 4" dia. grommets
	-	OR-GXC2448TPC-B	OR-GXC2448TPC-B	OR-GXC2448TPC-B	48" deep, cabling H-panel
	OR-GXC2442TPC-B	OR-GXC2442TPC-B	OR-GXC2442TPC-B	OR-GXC2442TPC-B	42" deep, cabling H-panel
	OR-GXC2436TPC-B	OR-GXC2436TPC-B	OR-GXC2436TPC-B	OR-GXC2436TPC-B	36" deep, cabling H-panel
Top Fans / Brush	OR-MMCFAN-6	OR-MMCFAN-6	OR-MMCFAN-6	OR-MMCFAN-6	6" fan for top panel, 120V, 235 CFM, 24" cord, 1 fan
	OR-GXCTPBK	OR-GXCTPBK	OR-GXCTPBK	OR-GXCTPBK	Brush kit for cabling H-panel, covers both openings
Casters	OR-GXCCSTR-4	OR-GXCCSTR-4	OR-GXCCSTR-4	OR-GXCCSTR-4	Casters, set of 4

Note: Replace "-B" with "-W" for white

RECOMMENDED ACCESSORIES

	24U	42U	45U	48U	DESCRIPTION
Cable Management	-	OR-GXC42VFK	OR-GXC45VFK	OR-GXC48VFK	Vertical finger kit , covers 1 rail
	OR-MM6BLC	OR-MM6BLC	OR-MM6BLC	OR-MM6BLC	Bend limiting clip, 3.25" for vertical finger kits, qty 12
	OR-GXC24VPMLD	OR-GXC42VPMLD	OR-GXC45VPMLD	OR-GXC48VPMLD	Cable lacing/PDU mount, double-wide
	-	OR-GXC4206VWT-B	OR-GXC4506VWT-B	OR-GXC4806VWT-B	Vertical wire trellis, 6" wide
Blanking Panels	OR-BFPT-1RU-10	OR-BFPT-1RU-10	OR-BFPT-1RU-10	OR-BFPT-1RU-10	Blanking panel, plastic, tool-less, 1U, pack of 10
Shelves	OR-MMCFSV-1926	OR-MMCFSV-1926	OR-MMCFSV-1926	OR-MMCFSV-1926	Fixed - 19" EIA x 26"D, 4-point mount, 200 lbs. capacity
Hardware	OR-PS-1224CN	OR-PS-1224CN	OR-PS-1224CN	OR-PS-1224CN	Single hole cage nuts, #12-24 thread, pkg of 50, clear
	OR-60400533	OR-60400533	OR-60400533	OR-60400533	Panel mounting screws, #12-24 x 0.625", pkg of 50, black

Accessories are black unless noted otherwise

29.5" Wide GX Cabinets

The Mighty Mo GX 29.5"W was developed to meet the ever increasing cable densities while maintaining proper airflow patterns. Predictable air inlet temperature to side-breathing switches is ensured by installing an airflow baffle. Efficiency is gained by properly channeling the airflow to help solve the problem of over-temperature alarms. If the equipment has a front-to-rear airflow pattern, bypass airflow is eliminated by installing an air dam kit on the face of the cabinet. Side patching kits allow for mounting patch panels outside of the vertical rack unit space. Each kit contains (2) 1U 19" EIA mounting locations between the vertical mounting rail and the outside of the cabinet, allowing deployment of up to four additional patch panels per cabinet. A wide cable management offering facilitates proper routing of cabling to maintain the integrity of the network. The Mighty Mo GX will meet your most demanding network applications and is UL and cUL listed, UL 60950-1 2nd Edition, NWIN.

Configured-to-Order

Dimensions

- 42U – 29.5"W x 78.75"H x (36", 42", 48")D
- 45U – 29.5"W x 84.00"H x (36", 42", 48")D
- 48U – 29.5"W x 89.25"H x (36", 42", 48")D

Weight Load Capacity

- 3,000 lbs. static
- 2,250 lbs. on casters

Agency Approvals

- UL60950-1
- RoHS compliant
- EIA compliant

Colors

- Black or white



FRAMES

42U	45U	48U	DESCRIPTION
OR-GXC422948-B	OR-GXC452948-B	OR-GXC482948-B	48" deep frame with leveling feet
OR-GXC422942-B	OR-GXC452942-B	OR-GXC482942-B	42" deep frame with leveling feet
OR-GXC422936-B	OR-GXC452936-B	OR-GXC482936-B	36" deep frame with leveling feet

Note: Replace "-B" with "-W" for white

ENCLOSURE OPTIONS

	42U	45U	48U	DESCRIPTION
EIA Mounting Rails	OR-GXC4229M38-B	OR-GXC4529M38-B	OR-GXC4829M38-B	0.375" square hole, 14 ga., black, includes 2 rails
	OR-GXC4229M12-B	OR-GXC4529M12-B	OR-GXC4829M12-B	#12-24 tapped, 12 ga., black, includes 2 rails
Doors, Full Width	OR-GXC4229DFM-B	OR-GXC4529DFM-B	OR-GXC4829DFM-B	Full width, mesh, 180° swing
	OR-GXC4229DFP-B	OR-GXC4529DFP-B	OR-GXC4829DFP-B	Full width, Plexiglas®, 180° swing
	OR-GXC4229DFS-B	OR-GXC4529DFS-B	OR-GXC4829DFS-B	Full width, solid, 180° swing
Doors, Split	OR-GXC4229DSM-B	OR-GXC4529DSM-B	OR-GXC4829DSM-B	Split, mesh, 180° swing
	OR-GXC4229DSS-B	OR-GXC4529DSS-B	OR-GXC4829DSS-B	Split, solid, 180° swing
Side Panels	OR-GXC4248SPSL-B	OR-GXC4548SPSL-B	OR-GXC4848SPSL-B	48" deep, solid, locking, covers 1 side of frame
	OR-GXC4242SPSL-B	OR-GXC4542SPSL-B	OR-GXC4842SPSL-B	42" deep, solid, locking, covers 1 side of frame
	OR-GXC4236SPSL-B	OR-GXC4536SPSL-B	OR-GXC4836SPSL-B	36" deep, solid, locking, covers 1 side of frame
Top Panels	OR-GXC2948TPS-B	OR-GXC2948TPS-B	OR-GXC2948TPS-B	48" deep, solid, includes (2) 4" dia. grommets
	OR-GXC2942TPS-B	OR-GXC2942TPS-B	OR-GXC2942TPS-B	42" deep, solid, includes (2) 4" dia. grommets
	OR-GXC2936TPS-B	OR-GXC2936TPS-B	OR-GXC2936TPS-B	36" deep, solid, includes (2) 4" dia. grommets
	OR-GXC2948TPV-B	OR-GXC2948TPV-B	OR-GXC2948TPV-B	48" deep, vented or fan, includes (2) 4" dia. grommets
	OR-GXC2942TPV-B	OR-GXC2942TPV-B	OR-GXC2942TPV-B	42" deep, vented or fan, includes (2) 4" dia. grommets
	OR-GXC2936TPV-B	OR-GXC2936TPV-B	OR-GXC2936TPV-B	36" deep, vented or fan, includes (2) 4" dia. grommets
	OR-GXC2948TPC-B	OR-GXC2948TPC-B	OR-GXC2948TPC-B	48" deep, cabling H-panel
	OR-GXC2942TPC-B	OR-GXC2942TPC-B	OR-GXC2942TPC-B	42" deep, cabling H-panel
	OR-GXC2936TPC-B	OR-GXC2936TPC-B	OR-GXC2936TPC-B	36" deep, cabling H-panel
Top Fans / Brush	OR-MMCFAN-6	OR-MMCFAN-6	OR-MMCFAN-6	6" fan for top panel, 120V, 235 CFM, 24" cord, 1 fan
	OR-GXCTPBK	OR-GXCTPBK	OR-GXCTPBK	Brush kit for cabling H-panel, covers both openings
Casters	OR-GXCCSTR-4	OR-GXCCSTR-4	OR-GXCCSTR-4	Casters, set of 4

Note: Replace "-B" with "-W" for white

RECOMMENDED ACCESSORIES

	42U	45U	48U	DESCRIPTION
Cable Management	OR-GXC42VFK	OR-GXC45VFK	OR-GXC48VFK	Vertical finger kit, covers 1 rail
	OR-MM6BLC	OR-MM6BLC	OR-MM6BLC	Bend limiting clip, 3.25" for vertical finger kits, qty 12
	OR-GXC42VPMLD	OR-GXC45VPMLD	OR-GXC48VPMLD	Cable lacing/PDU mount, double-wide
	OR-GXC4206VWT-B	OR-GXC4506VWT-B	OR-GXC4806VWT-B	Vertical wire trellis, 6" wide
	OR-GXC29WMK-5	OR-GXC29WMK-5	OR-GXC29WMK-5	Wire manager kit, mounts between (2) 29.5"W frames, kit of 5
	OR-GXC4229SPB-B	OR-GXC4529SPB-B	OR-GXC4829SPB-B	Side patching baffle - covers one side of cabinet
Airflow Management	OR-GXC4229ADK-B	OR-GXC4529ADK-B	OR-GXC4829ADK-B	Air dam kit, 29.5" W cabinets
	OR-GXCAB421629	OR-GXCAB451629	OR-GXCAB481629	Angled airflow baffles, 16.25"D, mounts between (2) 29.5"W frames
	OR-GXCAB423029	OR-GXCAB453029	OR-GXCAB483029	Angled airflow baffles, 30"D, mounts between (2) 29.5"W frames
Blanking Panels	OR-BFPT-1RU-10	OR-BFPT-1RU-10	OR-BFPT-1RU-10	Blanking panel, plastic, tool-less, 1U, pack of 10
Shelves	OR-MMCFSV-1926	OR-MMCFSV-1926	OR-MMCFSV-1926	Fixed shelf - 19"EIA x 26"D, 4-point mount, 200 lbs. capacity
Hardware	OR-PS-1224CN	OR-PS-1224CN	OR-PS-1224CN	Single hole cage nuts, #12-24 thread, pkg of 50, clear
	OR-60400533	OR-60400533	OR-60400533	Panel mounting screws, #12-24 x 0.625", pkg of 50, black

Accessories are black unless noted otherwise

31.5" Wide GX Cabinets

The 31.5"W Mighty Mo GX possesses all the features and benefits of the 29.5"W cabinet while providing more width for cable intensive applications. The extra width allows for larger cable bundles to be managed to the sides of the cabinet and not impede airflow. Multiple top panels are also available providing flexibility for cable entry and egress. The Mighty Mo GX is UL and cUL listed, UL 60950-1 2nd Edition, NWIN. These cabinets are configured-to-order, ensuring you get only what you need for your application.

Configured-to-Order

Dimensions

- 42U – 31.5"W x 78.75"H x (36", 42", 48")D
- 45U – 31.5"W x 84.00"H x (36", 42", 48")D
- 48U – 31.5"W x 89.25"H x (36", 42", 48")D

Weight Load Capacity

- 3,000 lbs. static
- 2,250 lbs. on casters

Agency Approvals

- UL60950-1
- RoHS compliant
- EIA compliant

Colors

- Black or white



FRAMES

42U	45U	48U	DESCRIPTION
OR-GXC423148-B	OR-GXC453148-B	OR-GXC483148-B	48" deep frame with leveling feet
OR-GXC423142-B	OR-GXC453142-B	OR-GXC483142-B	42" deep frame with leveling feet
OR-GXC423136-B	OR-GXC453136-B	OR-GXC483136-B	36" deep frame with leveling feet

Note: Replace "-B" with "-W" for white

ENCLOSURE OPTIONS

	42U	45U	48U	DESCRIPTION
EIA Mounting Rails	OR-GXC4231M38-B	OR-GXC4531M38-B	OR-GXC4831M38-B	0.375" square hole, 14 ga., black, includes 2 rails
	OR-GXC4231M12-B	OR-GXC4531M12-B	OR-GXC4831M12-B	#12-24 tapped, 12 ga., black, includes 2 rails
Doors, Full Width	OR-GXC4231DFM-B	OR-GXC4531DFM-B	OR-GXC4831DFM-B	Full width, mesh, 180° swing
	OR-GXC4231DFP-B	OR-GXC4531DFP-B	OR-GXC4831DFP-B	Full width, Plexiglas®, 180° swing
	OR-GXC4231DFS-B	OR-GXC4531DFS-B	OR-GXC4831DFS-B	Full width, solid, 180° swing
Doors, Split	OR-GXC4231DSM-B	OR-GXC4531DSM-B	OR-GXC4831DSM-B	Split, mesh, 180° swing
	OR-GXC4231DSS-B	OR-GXC4531DSS-B	OR-GXC4831DSS-B	Split, solid, 180° swing
Side Panels	OR-GXC4248SPSL-B	OR-GXC4548SPSL-B	OR-GXC4848SPSL-B	48" deep, solid, locking, covers 1 side of frame
	OR-GXC4242SPSL-B	OR-GXC4542SPSL-B	OR-GXC4842SPSL-B	42" deep, solid, locking, covers 1 side of frame
	OR-GXC4236SPSL-B	OR-GXC4536SPSL-B	OR-GXC4836SPSL-B	36" deep, solid, locking, covers 1 side of frame
Top Panels	OR-GXC3148TPS-B	OR-GXC3148TPS-B	OR-GXC3148TPS-B	48" deep, solid, includes (2) 4" dia. grommets
	OR-GXC3142TPS-B	OR-GXC3142TPS-B	OR-GXC3142TPS-B	42" deep, solid, includes (2) 4" dia. grommets
	OR-GXC3136TPS-B	OR-GXC3136TPS-B	OR-GXC3136TPS-B	36" deep, solid, includes (2) 4" dia. grommets
	OR-GXC3148TPV-B	OR-GXC3148TPV-B	OR-GXC3148TPV-B	48" deep, vented or fan, includes (2) 4" dia. grommets
	OR-GXC3142TPV-B	OR-GXC3142TPV-B	OR-GXC3142TPV-B	42" deep, vented or fan, includes (2) 4" dia. grommets
	OR-GXC3136TPV-B	OR-GXC3136TPV-B	OR-GXC3136TPV-B	36" deep, vented or fan, includes (2) 4" dia. grommets
	OR-GXC3148TPC-B	OR-GXC3148TPC-B	OR-GXC3148TPC-B	48" deep, cabling H-panel
	OR-GXC3142TPC-B	OR-GXC3142TPC-B	OR-GXC3142TPC-B	42" deep, cabling H-panel
	OR-GXC3136TPC-B	OR-GXC3136TPC-B	OR-GXC3136TPC-B	36" deep, cabling H-panel
Top Fans / Brush	OR-MMCFAN-6	OR-MMCFAN-6	OR-MMCFAN-6	6" fan for top panel, 120V, 235 CFM, 24" cord, 1 fan
	OR-GXCTPBK	OR-GXCTPBK	OR-GXCTPBK	Brush kit for cabling H-panel, covers both openings
Casters	OR-GXCCSTR-4	OR-GXCCSTR-4	OR-GXCCSTR-4	Casters, set of 4

Note: Replace "-B" with "-W" for white

RECOMMENDED ACCESSORIES

	42U	45U	48U	DESCRIPTION
Cable Management	OR-GXC42VFK	OR-GXC45VFK	OR-GXC48VFK	Vertical finger kit, covers 1 rail
	OR-MM6BLC	OR-MM6BLC	OR-MM6BLC	Bend limiting clip, 3.25" for vertical finger kits, qty 12
	OR-GXC42VPMLD	OR-GXC45VPMLD	OR-GXC48VPMLD	Cable lacing/PDU mount, double-wide
	OR-GXC4206VWT-B	OR-GXC4506VWT-B	OR-GXC4806VWT-B	Vertical wire trellis, 6" wide
	OR-GXC31WMK-5	OR-GXC31WMK-5	OR-GXC31WMK-5	Wire manager kit, mounts between (2) 31.5"W frames, kit of 5
	OR-GXC4231SPB-B	OR-GXC4531SPB-B	OR-GXC4831SPB-B	Side patching baffle - covers one side of cabinet
Airflow Management	OR-GXC4231ADK-B	OR-GXC4531ADK-B	OR-GXC4831ADK-B	Air dam kit, 31.5" W cabinets
	OR-GXCAB421631	OR-GXCAB451631	OR-GXCAB481631	Angled airflow baffles, 16.25"D, mounts between (2) 31.5"W frames
	OR-GXCAB423031	OR-GXCAB453031	OR-GXCAB483031	Angled airflow baffles, 30"D, mounts between (2) 31.5"W frames
Blanking Panels	OR-BFPT-1RU-10	OR-BFPT-1RU-10	OR-BFPT-1RU-10	Blanking panel, plastic, tool-less, 1U, pack of 10
Shelves	OR-MMCFSV-1926	OR-MMCFSV-1926	OR-MMCFSV-1926	Fixed shelf - 19"EIA x 26"D, 4-point mount, 200 lbs. capacity
Hardware	OR-PS-1224CN	OR-PS-1224CN	OR-PS-1224CN	Single hole cage nuts, #12-24 thread, pkg of 50, clear
	OR-60400533	OR-60400533	OR-60400533	Panel mounting screws, #12-24 x 0.625", pkg of 50, black

Accessories are black unless noted otherwise

Airflow Management

AIR DAM KITS

Blocking the opening from the edge of the front mounting rails to the side panel of the cabinet, as well as the space above and below the mounting rails, keeps hot and cold air from mixing. There are 3" starburst shaped cable pass throughs; 2 per section, 4 per side. Air Dam kits cover both sides of the cabinet. Available for the 29.5" and 31.5" cabinet widths.

FRAME HEIGHT	CABINET WIDTH	
	29.5"	31.5"
42U	OR-GXC4229ADK-B	OR-GXC4231ADK-B
45U	OR-GXC4529ADK-B	OR-GXC4531ADK-B
48U	OR-GXC4829ADK-B	OR-GXC4831ADK-B



FILLER PANELS

Improve network performance by utilizing filler panels to fill all open rack spaces and control airflow, improving the separation of the hot and cold aisles. Tool-less plastic panels work with tapped or square holes. Use the 19" rack mount fan panel to eliminate hot spots.



Filler Panels, Tool-less Snap-in 19" EIA (Ships in packs of 10)

HEIGHT	PART NUMBER
1U	OR-BFPT-1RU-10
2U	OR-BFPT-2RU-10



Filler Panels, Formed Steel 19" EIA

HEIGHT	PART NUMBER
1U	OR-MMCFPS-1-B
2U	OR-MMCFPS-2-B
3U	OR-MMCFPS-3-B
4U	OR-MMCFPS-4-B
5U	OR-MMCFPS-5-B
6U	OR-MMCFPS-6-B



Filler Panels, Fan - 19" EIA-120V

HEIGHT	PART NUMBER
2U	OR-MMCFANP19-4-2

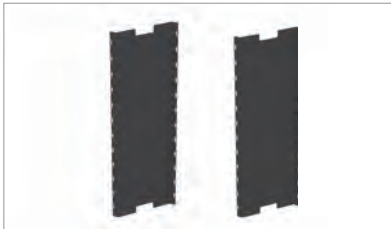
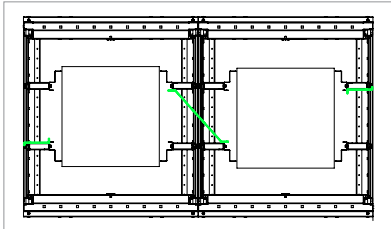


SIDE PATCHING BAFFLES

Zero RU patching: 1RU patch panels can be vertically mounted outside of your typical equipment panel space in a 'side patching baffle'. Kit includes 1RU 19" equipment mounting location per section (2RU total – one on top and bottom, for each side). Available for the 29.5" and 31.5" cabinet widths. Side patching can allow the use of a single length patch cord.

FRAME HEIGHT	CABINET WIDTH	
	29.5"	31.5"
42U	OR-GXC4229SPB-B	OR-GXC4231SPB-B
45U	OR-GXC4529SPB-B	OR-GXC4531SPB-B
48U	OR-GXC4829SPB-B	OR-GXC4831SPB-B





AIRFLOW BAFFLES, BETWEEN CABINETS

Angled airflow baffles are designed to work with side breathing switches and redirect airflow to maintain separation between the hot and cold aisles. They mount to the mounting rails of one cabinet, across to the adjoining cabinet. The baffle is notched to allow installation around the center Unistrut. Available for the 29.5" and 31.5" cabinet widths.

16.25" Rail Spacing	CABINET WIDTH	
FRAME HEIGHT	29.5"	31.5"
42U	OR-GXCAB421629	OR-GXCAB421631
45U	OR-GXCAB451629	OR-GXCAB451631
48U	OR-GXCAB481629	OR-GXCAB481631

30.00" Rail Spacing	CABINET WIDTH	
FRAME HEIGHT	29.5"	31.5"
42U	OR-GXCAB423029	OR-GXCAB423031
45U	OR-GXCAB453029	OR-GXCAB453031
48U	OR-GXCAB483029	OR-GXCAB483031



AIRFLOW BAFFLES, END OF ROW

Blocking the opening from the edge of the front mounting rails to the side panel of the cabinet maintains the separation between the hot and cold aisles. These baffles work with side breathing switches. There are 3" starburst shaped cable pass throughs; 2 per section, 4 per side. Available for the 29.5" and 31.5" cabinet widths.

16.25" Rail Spacing	CABINET WIDTH	
FRAME HEIGHT	29.5"	31.5"
42U	OR-GXCAB421629SA	OR-GXCAB421631SA
45U	OR-GXCAB451629SA	OR-GXCAB451631SA
48U	OR-GXCAB481629SA	OR-GXCAB481631SA

30.00" Rail Spacing	CABINET WIDTH	
FRAME HEIGHT	29.5"	31.5"
42U	OR-GXCAB423029SA	OR-GXCAB423031SA
45U	OR-GXCAB453029SA	OR-GXCAB453031SA
48U	OR-GXCAB483029SA	OR-GXCAB483031SA

Cable Management

VERTICAL FINGER KITS

Provide support and maintain the proper bend radius for patch cords and cable at each rack unit. Also protects equipment ports from damage by minimizing tension on the cords. Vertical finger kits mount directly to the vertical mounting rails. Each kit covers 1 rail. Bend limiting clips provide bend limitation for fiber optic jumpers.

CABINET HEIGHT	PART NUMBER	PART NUMBER	DESCRIPTION
42U	OR-GXC42VFK	OR-MM6BLC	Mighty Mo bend limiting clip, 3.25" long, snaps onto fingers, qty 12
45U	OR-GXC45VFK		
48U	OR-GXC48VFK		



VERTICAL WIRE TRELLIS

Flat wire form has vertical and horizontal wire cross hatch pattern. The horizontal wires are set at every 1 rack unit to provide a flexible lacing back-drop. The trellis is 6" wide to accommodate several cable bundles at one time.

CABINET HEIGHT	PART NUMBER
42U	OR-GXC4206VWT-B
45U	OR-GXC4506VWT-B
48U	OR-GXC4806VWT-B



WIRE MANAGER KIT

Set of (5) 2" tall wire forms connect cable management fingers between cabinets to simulate a wire management 'cage' within the open space between two ganged cabinets. Wire managers mount to vertical mounting rails between adjoining cabinets. As many wire forms as desired can be installed between cabinets.

CABINET HEIGHT	PART NUMBER
29.5"	OR-GXC29WMK-5
31.5"	OR-GXC31WMK-5

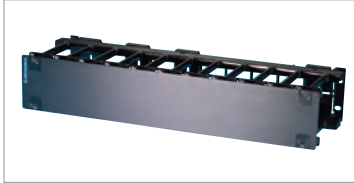


PDU MOUNT / LACING BARS

Available in single and double widths. Button mount allows for tool-less mounting of vertical PDUs. The tear-drop shaped slots allow hook and loop fasteners to be dropped over the bar and tightened instead of trying to feed the fasteners through from the back.

CABINET HEIGHT	SINGLE WIDE PART NUMBER	DOUBLE WIDE PART NUMBER
24U	OR-GXC24VPMLS	OR-GXC24VPMLD
42U	OR-GXC42VPMLS	OR-GXC42VPMLD
45U	OR-GXC45VPMLS	OR-GXC45VPMLD
48U	OR-GXC48VPMLS	OR-GXC48VPMLD

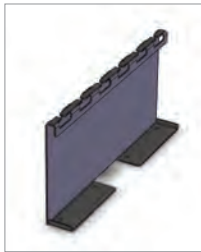




HORIZONTAL CABLE MANAGERS

Horizontal cable managers organize cables and maximize system performance.

PART NUMBER	DESCRIPTION
OR-MM6HMF1RU	Horizontal manager, fingers, cover, 1 rack unit
OR-MM6HMF2RU	Horizontal manager, fingers, cover, 2 rack units
OR-60400131	Horizontal manager, 5 steel rings, 3.5"D, 1 rack unit
OR-60400057	Horizontal manager, 5 steel rings, 4"D, 2 rack units



CABLE TRAY MOUNTING BRACKETS

Cable tray mounting brackets mount to the top of the cabinet and use the Cablofil FAS method to attach cable tray without any additional hardware. They can be used alone or in conjunction with cable troughs.

TRAY WIDTH	PART NUMBER
6"	OR-MMCCTMB06-B
12"	OR-MMCCTMB12-B
18"	OR-MMCCTMB18-B

Note: Replace "-B" with "-W" for white



CABLE RUNWAY BRACKETS

Cable runway brackets mount to the top of the cabinet, providing a surface to attach 6", 12" or 18" wide runway.

RUNWAY WIDTH	PART NUMBER
6"	OR-MMCCRMB06-B
12"	OR-MMCCRMB12-B
18"	OR-MMCCRMB18-B

Note: Replace "-B" with "-W" for white



CABLE TROUGHS

Cable troughs provide low profile cable routing that mounts to the top of the cabinet. They can be used alone or in conjunction with Cablofil® cable tray. Available in 6", 12" and 18" widths.

TROUGH WIDTH	CABINET WIDTH		
	24"	29.5"	31.5"
6"	OR-MMC2406CTCE-B	OR-GXC2906CTCE-B	OR-GXC3106CTCE-B
12"	OR-MMC2412CTCE-B	OR-GXC2912CTCE-B	OR-GXC3112CTCE-B
18"	OR-MMC2418CTCE-B	OR-GXC2918CTCE-B	OR-GXC3118CTCE-B

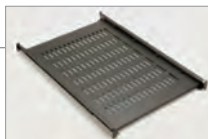
Note: Replace "-B" with "-W" for white

Accessories & Hardware

ACCESSORIES

Legrand | Ortronics offers a full range of sturdy equipment shelves and drawers to protect and support valuable equipment.

- Mounting hardware is included
- Color is black



Fixed Shelf - 4-point rack-mount

PART NUMBER	DESCRIPTION
OR-MMCFVS-1926	Fixed shelf - 19" EIA x 26"D, 4-point mount



Cantilevered Fixed Shelves - Solid

OR-MMCCSS1-1912	Cantilevered shelf, 1U, solid steel, 19" x 12"D
OR-MMCCSS2-1915	Cantilevered shelf, 2U, solid steel, 19" x 15"D
OR-MMCCSS3-1915	Cantilevered shelf, 3U, solid steel, 19" x 15"D



Cantilevered Fixed Shelves - Vented

OR-MMCCSV1-1912	Cantilevered shelf, 1U, vented steel, 19" x 12"D
OR-MMCCSV2-1915	Cantilevered shelf, 2U, vented steel, 19" x 15"D
OR-MMCCSV3-1915	Cantilevered shelf, 3U, vented steel, 19" x 15"D



Sliding Shelves

OR-MMCSSVL-1924	Sliding shelf, 19" EIA, 24"D vented, 100 lbs. capacity
OR-MMCSSVM-1924	Sliding shelf, 19" EIA, 24"D vented, 150 lbs. capacity
OR-MMCSSVH-1930	Sliding shelf, 19" EIA, 30"D solid, 300 lbs. capacity



Drawers

OR-MMCDR2-1915	Drawer, 2U, 19" EIA x 15"D
OR-MMCDR4-1915	Drawer, 4U, 19" EIA x 15"D

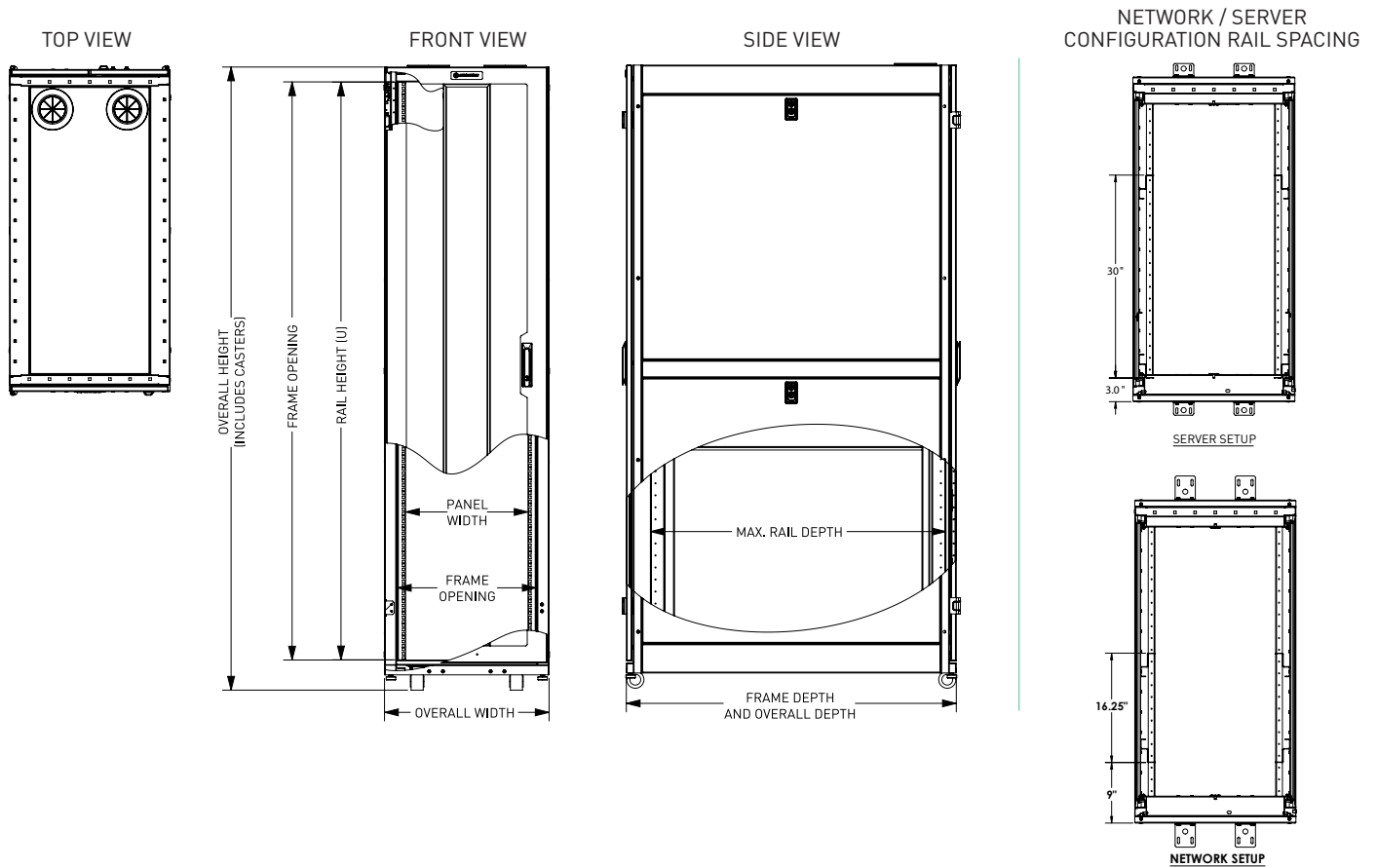
HARDWARE

The Ortronics® line of cabinet hardware provides the products needed to complete your installation. Rack unit cage nuts enable easy and quick installation of three cage nuts simultaneously.



PART NUMBER	DESCRIPTION
OR-RU-1224CN	Rack unit cage nuts, #12-24 thread, pkg of 50, clear
OR-PS-1224CN	Single hole cage nuts, #12-24 thread, pkg of 50, clear
OR-PS-M6X1CN	Single hole cage nuts, M6X1 thread, pkg of 50, clear
OR-MMCCNT00L	Cage nut installation tool
OR-60400533	Panel mounting screws, #12-24 x 0.625", pkg of 50, black
OR-PS-M6X1-50	Panel mounting screws, #12-24 x 0.625", pkg of 50, clear
OR-MMCUN-1420-10	Unistrut hardware kit, 10 each 1/4 20 bolts and Unistrut nuts - GX cabinets
OR-MMCRULBL-60-A	Adhesive rack unit label, 60 RU length

GX CABINET SERIES - DIMENSION TABLES



CABINET HEIGHTS

	24U	42U	45U	48U
Overall cabinet height, levelers at minimum height	47.25" (1200)	78.75" (2000)	84.00" (2134)	89.25" (2267)
Overall cabinet height with casters included	48.95" (1243)	80.45" (2043)	85.70" (2177)	90.95" (2310)
Vertical frame opening, front	42.13" (1070)	73.63" (1870)	78.88" (2004)	84.13" (2137)

CABINET WIDTHS

	24"	29.5"	31.5"
Overall width	23.94" (608)	29.44" (748)	31.44" (799)
Frame opening, front	20.44" (519)	25.94" (659)	27.94" (710)
Panel width	19" EIA"	19" EIA	19" EIA

CABINET DEPTHS

	36"	42"	48"
Overall depth	36.00" (914)	42.00" (1067)	48.00" (1219)
Overall depth, corner post to corner post	34.00" (864)	40.00" (1016)	46.00" (1168)
Min./max. rail depth	7" (178) / 31.5" (800)	7" (178) / 37.5" (953)	7" (178) / 43.5" (1105)

When adjusted to maximum depth on 24"W cabinets, mounting rails wrap around the frame corner posts.

[] indicates mm

Canada

570 Applewood Crescent
Vaughan, Ontario L4K 4B4
905-738-9195

designed to be better.™



Ortronics

125 Eugene O'Neill Drive
New London, CT 06320
Tel: 800-934-5432
860-445-3900 (sales)
Fax: 860-405-2992
www.legrand.us/ortronics